

# INIGO

PROPERTY NAME

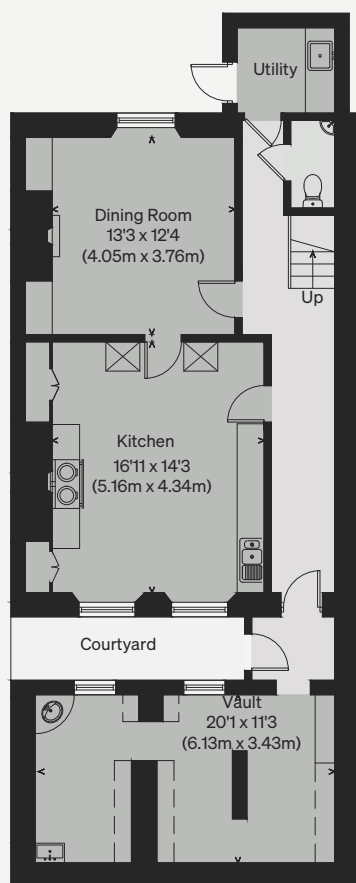
Northampton Street

LOCATION

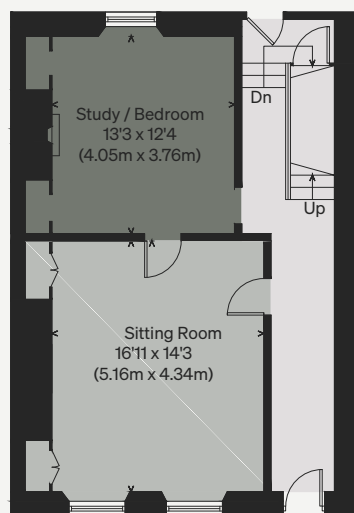
Bath, Somerset

Approximate Floor Area = 317.6 sq m / 3419 sq ft

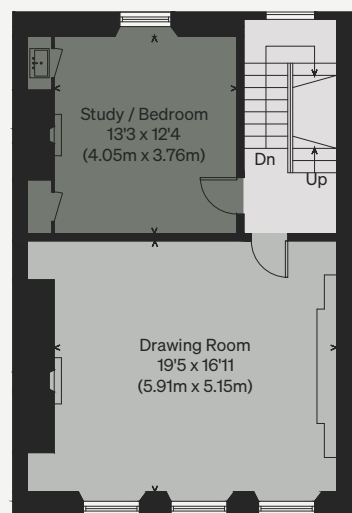
*Illustration for identification purposes only, measurements are approximate, not to scale*



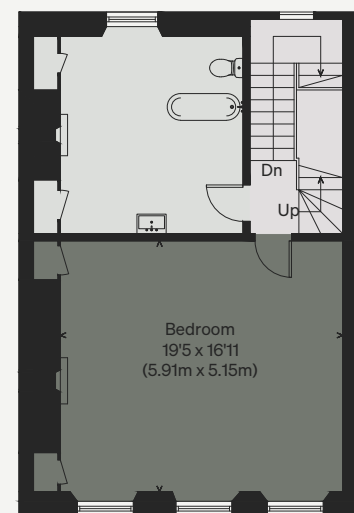
LOWER GROUND FLOOR



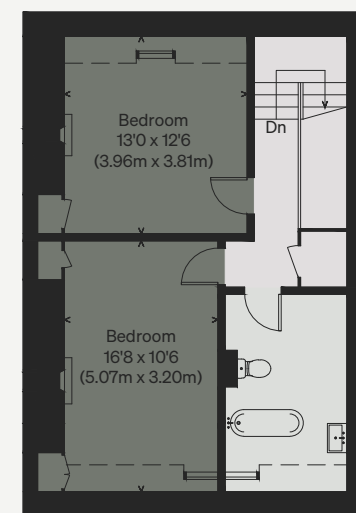
GROUND FLOOR



FIRST FLOOR



SECOND FLOOR



THIRD FLOOR

