

INIGO

PROPERTY NAME

Bridge Street

LOCATION

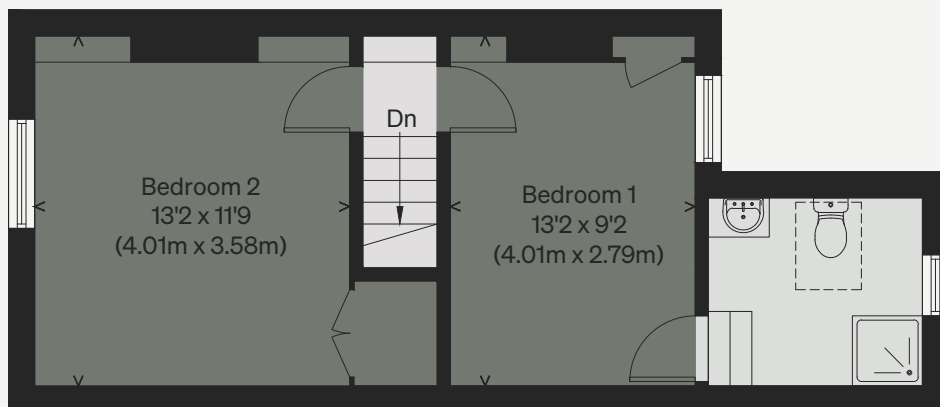
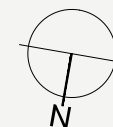
Oxford, Oxfordshire

Approximate Floor Area = 76.4 sq m / 822 sq ft

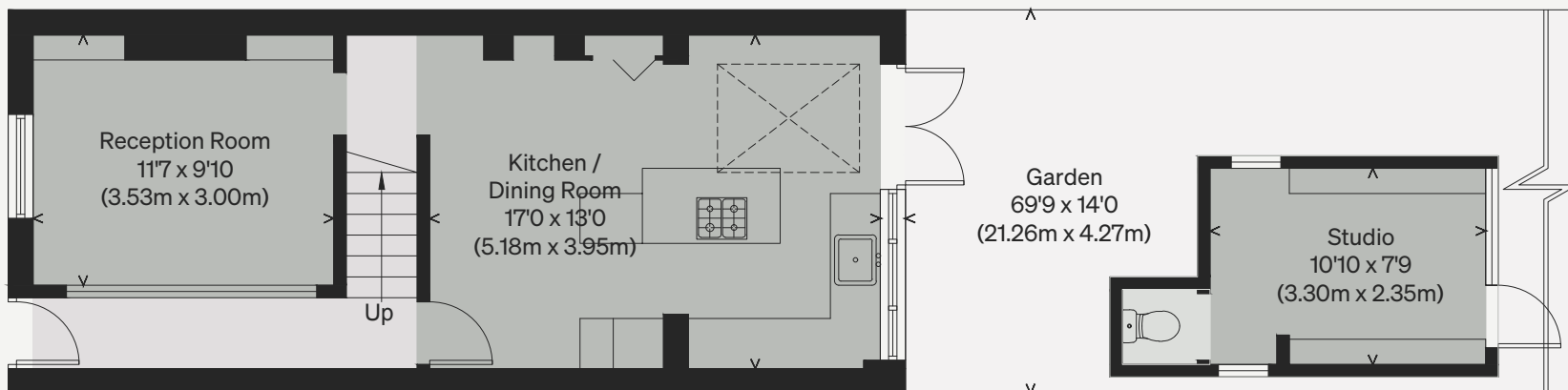
Studio = 8.7 sq m / 93 sq ft

Total = 85.1 sq m / 915 sq ft

Illustration for identification purposes only, measurements are approximate, not to scale



FIRST FLOOR



GROUND FLOOR