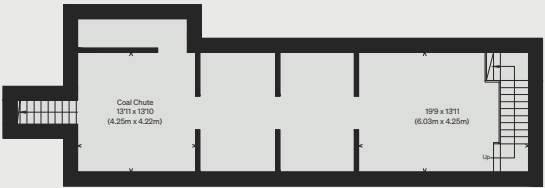
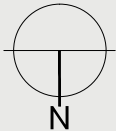


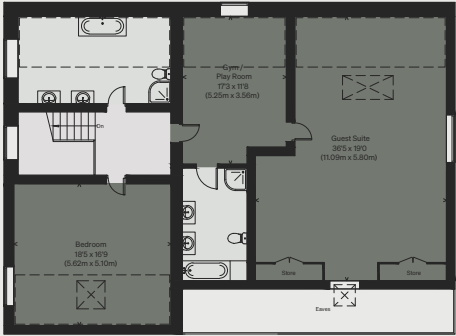
PROPERTY NAME
The Old Rectory

LOCATION
Northwich, Cheshire

Approximate Floor Area = 610.0 sq m / 6566 sq ft
Garage = 56.6 sq m / 609 sq ft
Cellar = 74.8 sq m / 805 sq ft
Total = 741.4 sq m / 7980 sq ft



CELLAR



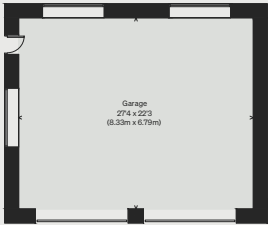
SECOND FLOOR



GROUND FLOOR



FIRST FLOOR



GARAGE