

INIGO

PROPERTY NAME

Pond Street

LOCATION

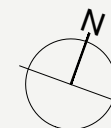
London NW3

Approximate Floor Area = 287.6 sq m / 3096 sq ft
(Excluding Reduced Headroom)

Reduced Headroom = 1.1 sq m / 12 sq ft

Total = 288.7 sq m / 3108 sq ft

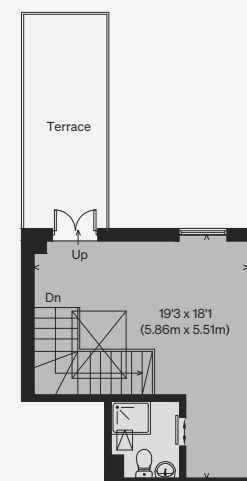
Illustration for identification purposes only, measurements are approximate, not to scale



GROUND FLOOR



FIRST FLOOR



SECOND FLOOR