

INIGO

PROPERTY NAME

Felin Brithdir

LOCATION

Rhydlewis, Ceredigion

*Illustration for identification purposes only,
measurements are approximate, not to scale*

Felin Brithdir

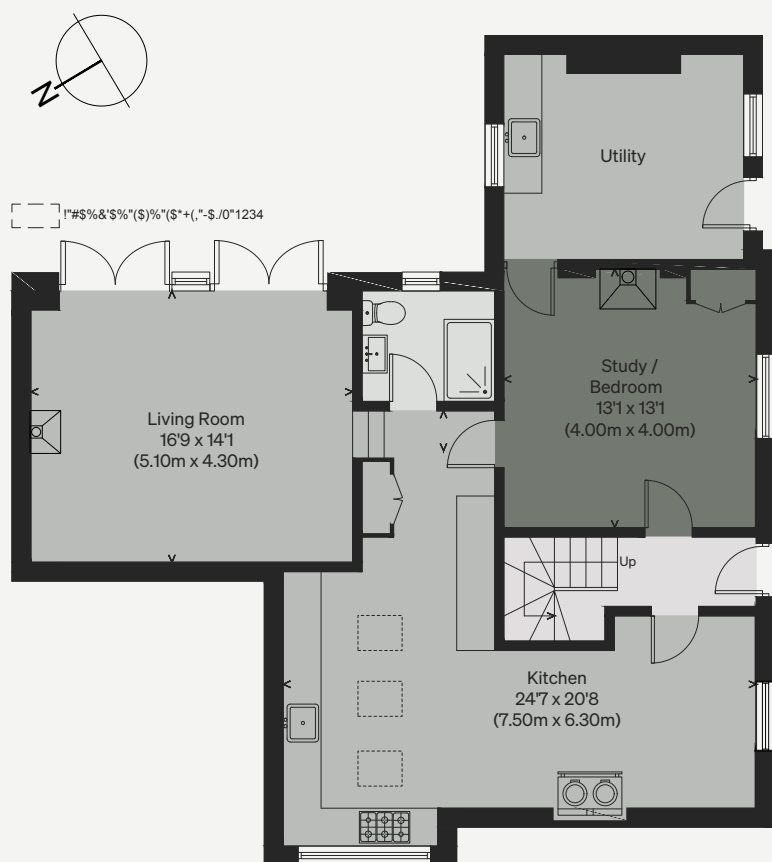
Approximate Floor Area = 142.0 sq m / 1528 sq ft

T'yr Gof

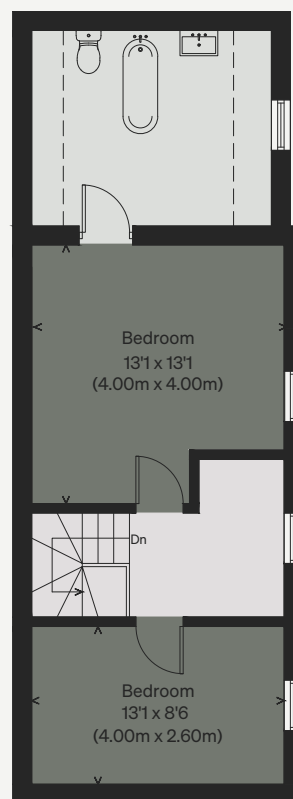
Approximate Floor Area = 42.6 sq m / 458 sq ft

Outbuildings = 9.5 sq m / 102 sq ft

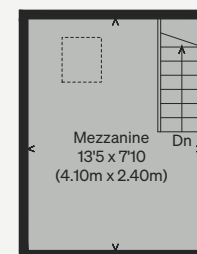
Total = 52.1 sq m / 560 sq ft



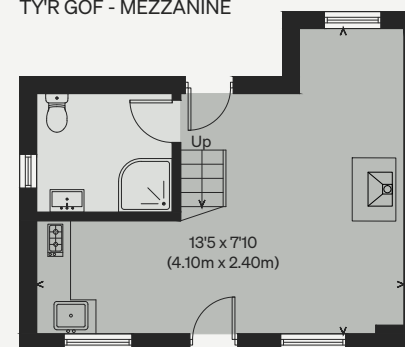
FELIN BRITHDIR - GROUND FLOOR



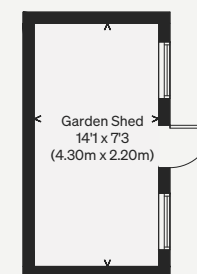
FELIN BRITHDIR - FIRST FLOOR



TY'R GOF - MEZZANINE



TY'R GOF - GROUND FLOOR



(Not Shown In Actual
Location / Orientation)

INIGO

PROPERTY NAME

Felin Brithdir

LOCATION

Rhydlewis, Ceredigion

*Illustration for identification purposes only,
measurements are approximate, not to scale*

The Mill - Approximate Floor Area = 88.6 sq m / 954 sq ft

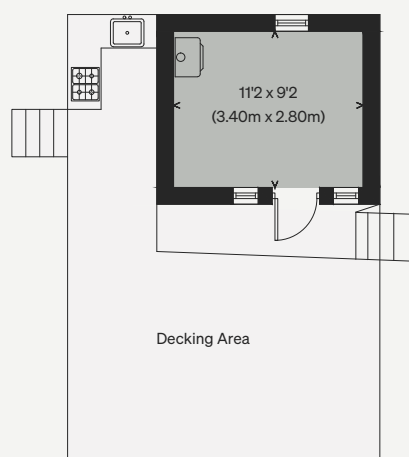
Lake House = 18.4 sq m / 198 sq ft

Total = 107 sq m / 1152 sq ft

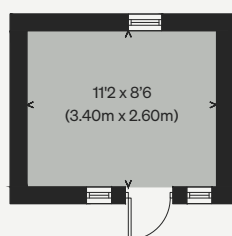
Workshop - Approximate Floor Area = 90.9 sq m / 978 sq ft

Garage = 34.0 sq m / 366 sq ft

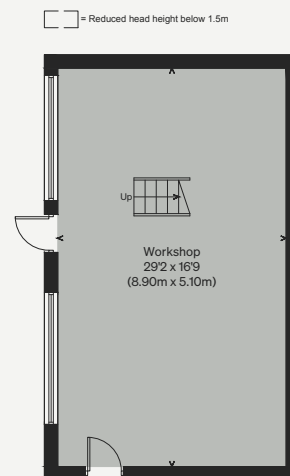
Total = 124.9 sq m / 1344 sq ft



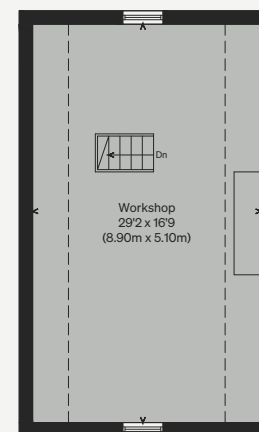
LAKE HOUSE - GROUND FLOOR



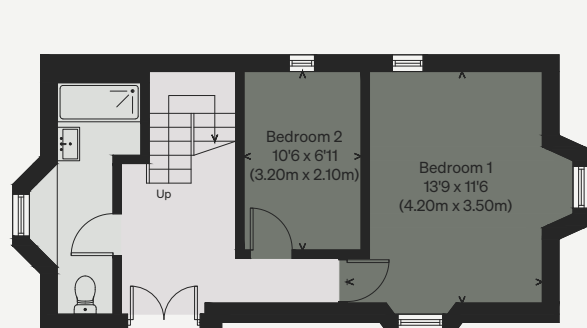
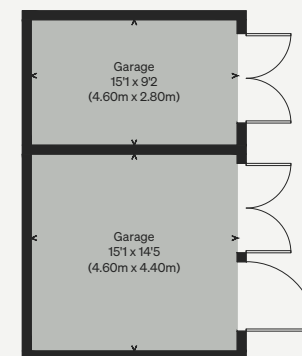
LAKE HOUSE - MEZZANINE



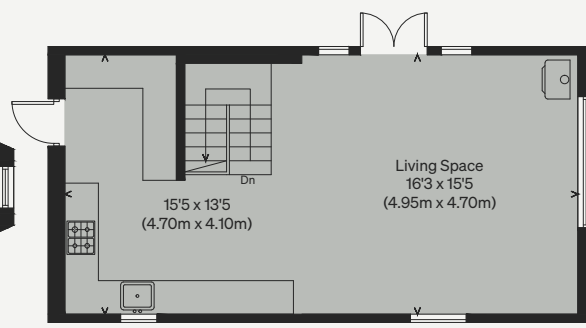
WORKSHOP - GROUND FLOOR



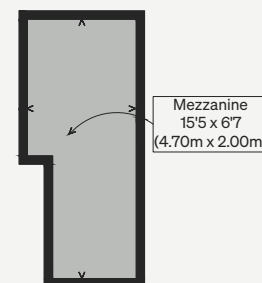
WORKSHOP - FIRST FLOOR



THE MILL - GROUND FLOOR



THE MILL - FIRST FLOOR



THE MILL - MEZZANINE

(Not Shown In Actual Location / Orientation)