

# INIGO

PROPERTY NAME

St Peter's Street

LOCATION

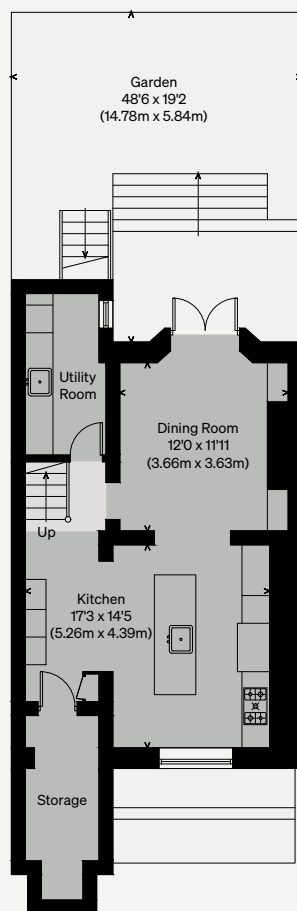
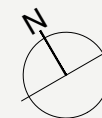
London N1

Approximate Floor Area = 171.7 sq m / 1848 sq ft

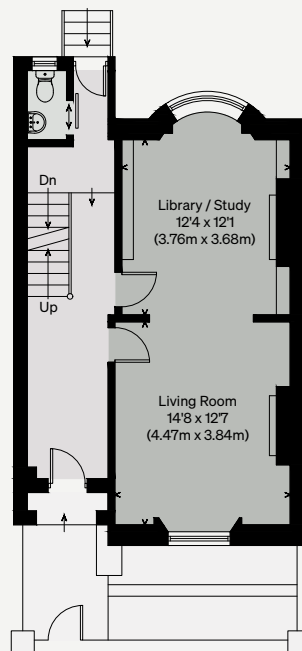
Limited Height Area = 10.6 sq m / 114 sq ft

Total = 182.3 sq m / 1962 sq ft

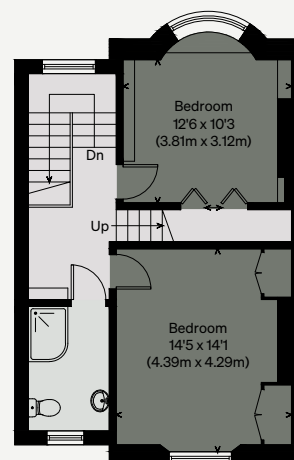
*Illustration for identification purposes only, measurements are approximate, not to scale*



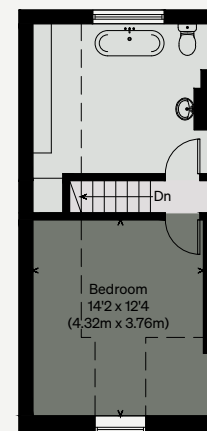
LOWER GROUND FLOOR



GROUND FLOOR



FIRST FLOOR



SECOND FLOOR