

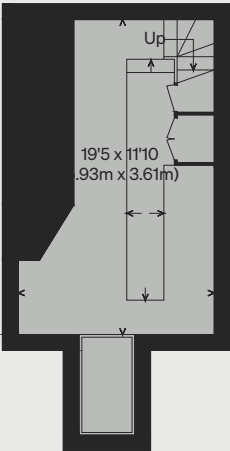
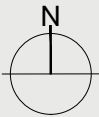
INIGO

PROPERTY NAME
Church Row

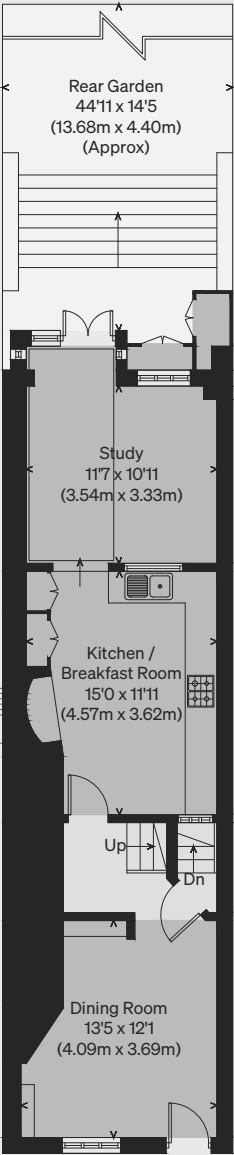
LOCATION
London, NW3

Approximate Floor Area = 155.24 sq m / 1671 sq ft

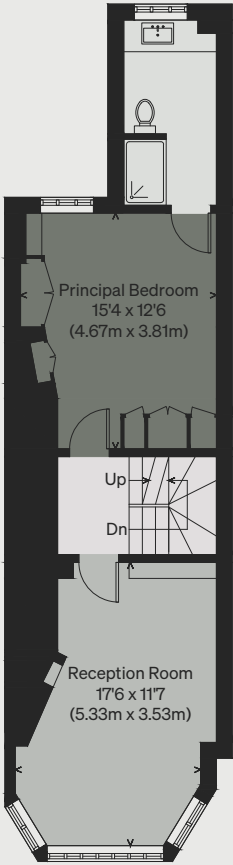
Illustration for identification purposes only,
measurements are approximate, not to scale



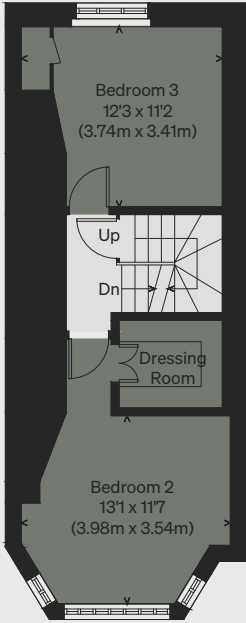
BASEMENT



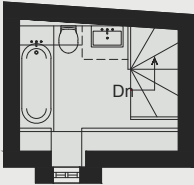
GROUND FLOOR



FIRST FLOOR



SECOND FLOOR



THIRD FLOOR