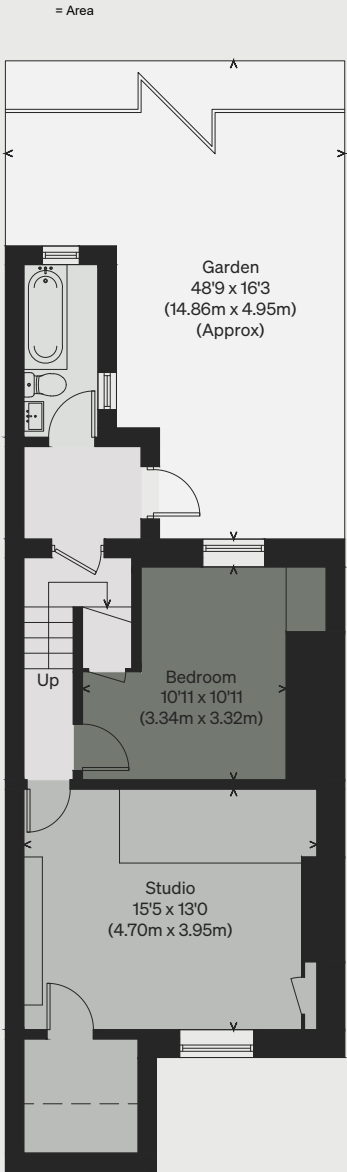


PROPERTY NAME
Balls Pond Road

LOCATION
London N1

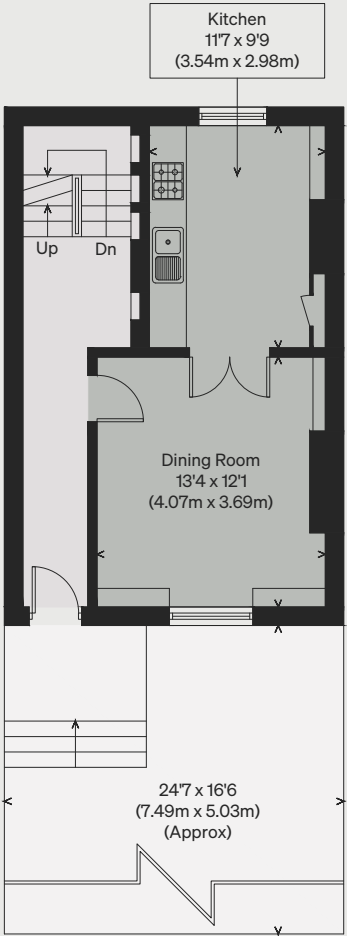
Approximate Floor Area = 163.3 sq m / 1758 sq ft

Illustration for identification purposes only,
measurements are approximate, not to scale

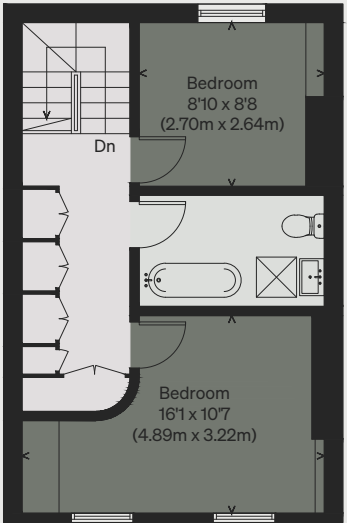


LOWER GROUND FLOOR

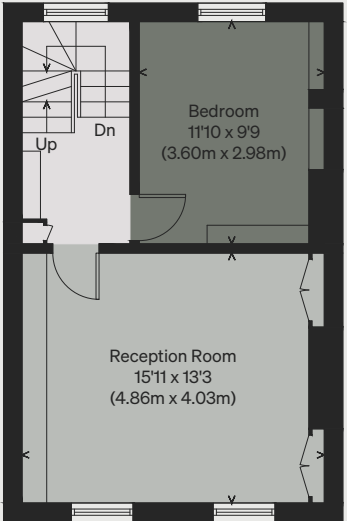
[] = Reduced head height below 1.5m



GROUND FLOOR



SECOND FLOOR



FIRST FLOOR

