

# INIGO

PROPERTY NAME

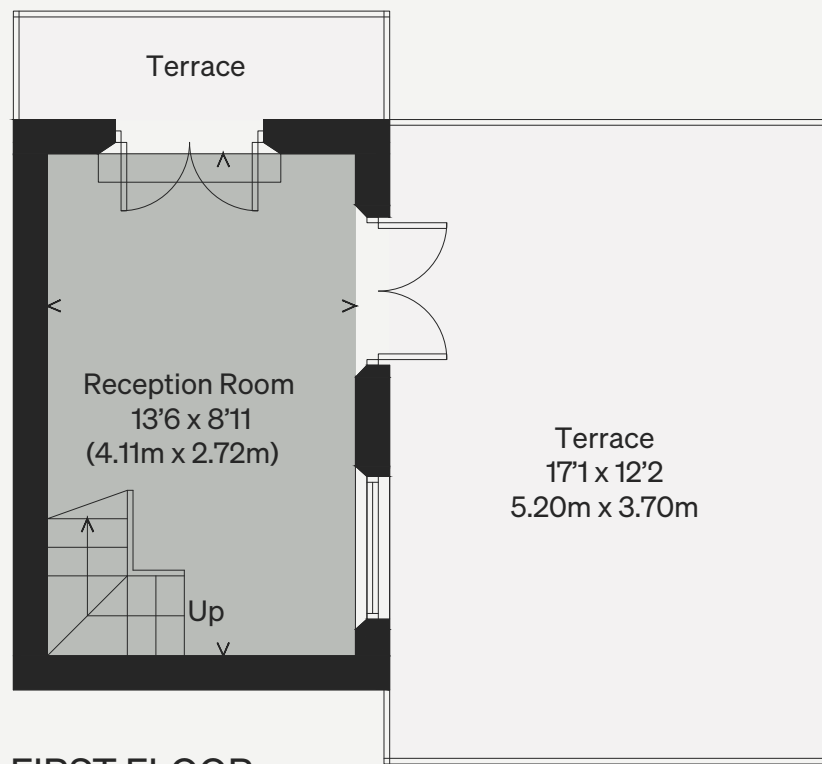
Harrington Gardens II

LOCATION

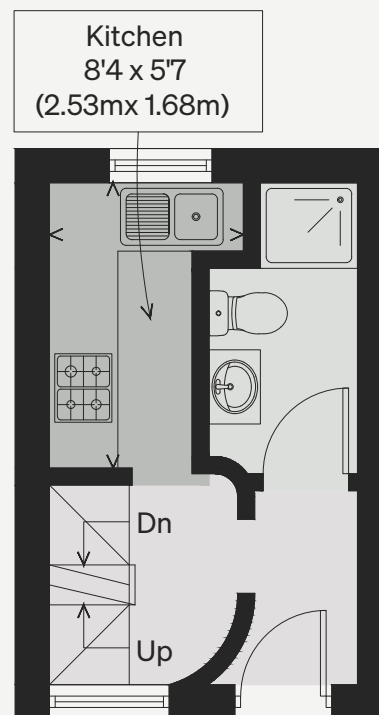
London SW7

*Illustration for identification purposes only, measurements are approximate, not to scale*

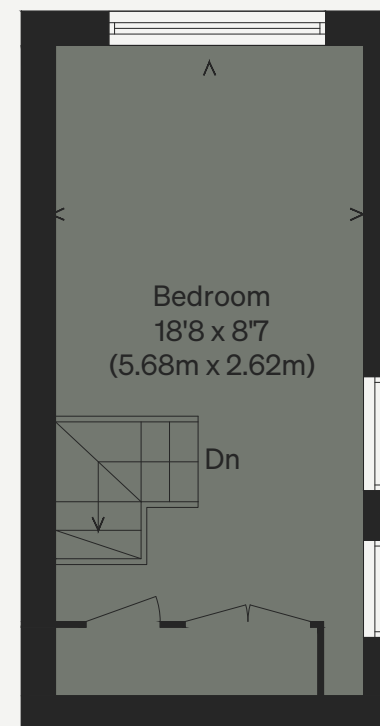
Approximate Floor Area = 37.16 sq m / 400 sq ft  
Terrace = 19.24 sq m / 19.38 sq ft



FIRST FLOOR



SECOND FLOOR



THIRD FLOOR

