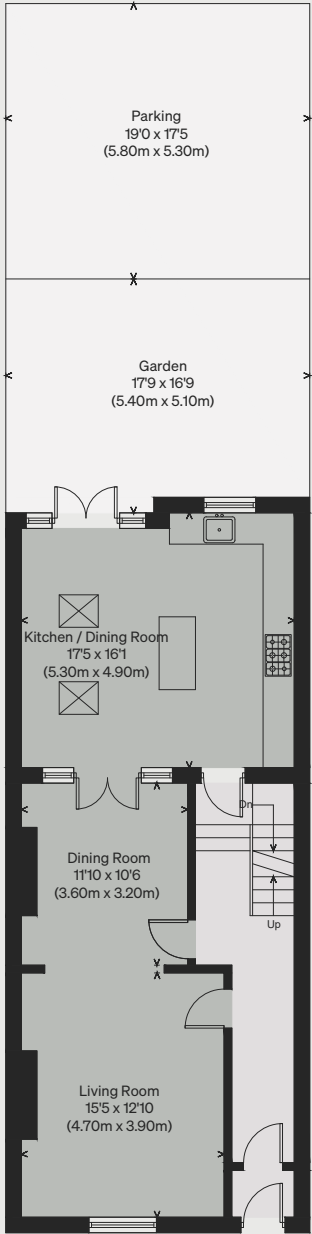
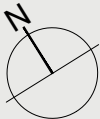


PROPERTY NAME
Princess Road West

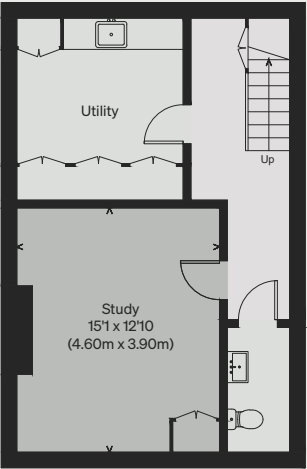
LOCATION
Leicester

Approximate Floor Area = 170.6 sq m / 1836 sq ft
Basement = 43.8 sq m / 471 sq ft
Total = 214.4 sq m / 2307 sq ft

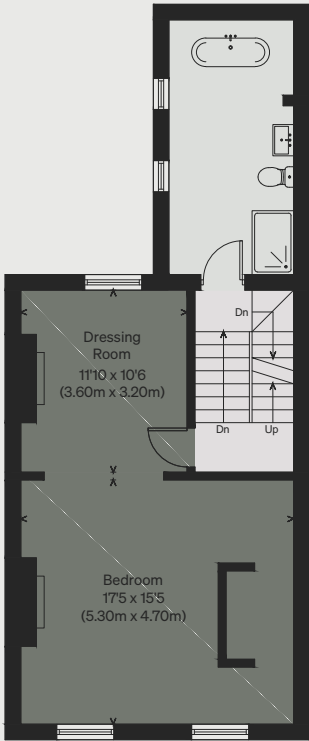
Illustration for identification purposes only,
measurements are approximate, not to scale



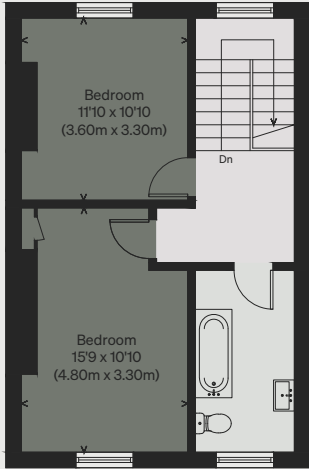
GROUND FLOOR



BASEMENT



FIRST FLOOR



SECOND FLOOR