

# INIGO

## PROPERTY NAME

Wrescombe Court

## LOCATION

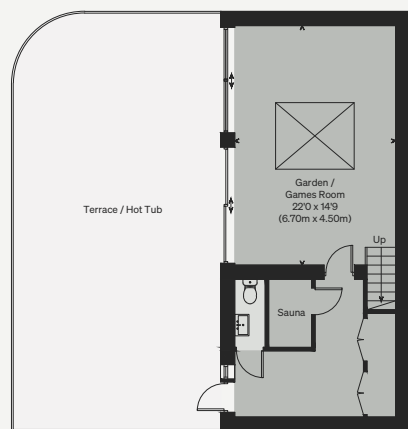
Newton Ferrers, Devon

Approximate Floor Area = 552.6 sq m / 5948 sq ft

Outbuilding = 28.3 sq m / 305 sq ft

Total = 580.9 sq m / 6253 sq ft

*Illustration for identification purposes only, measurements are approximate, not to scale*



LOWER GROUND FLOOR



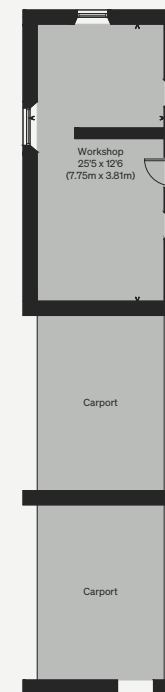
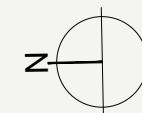
GROUND FLOOR



SECOND FLOOR



FIRST FLOOR



(Not Shown In Actual Location / Orientation)

# INIGO

PROPERTY NAME

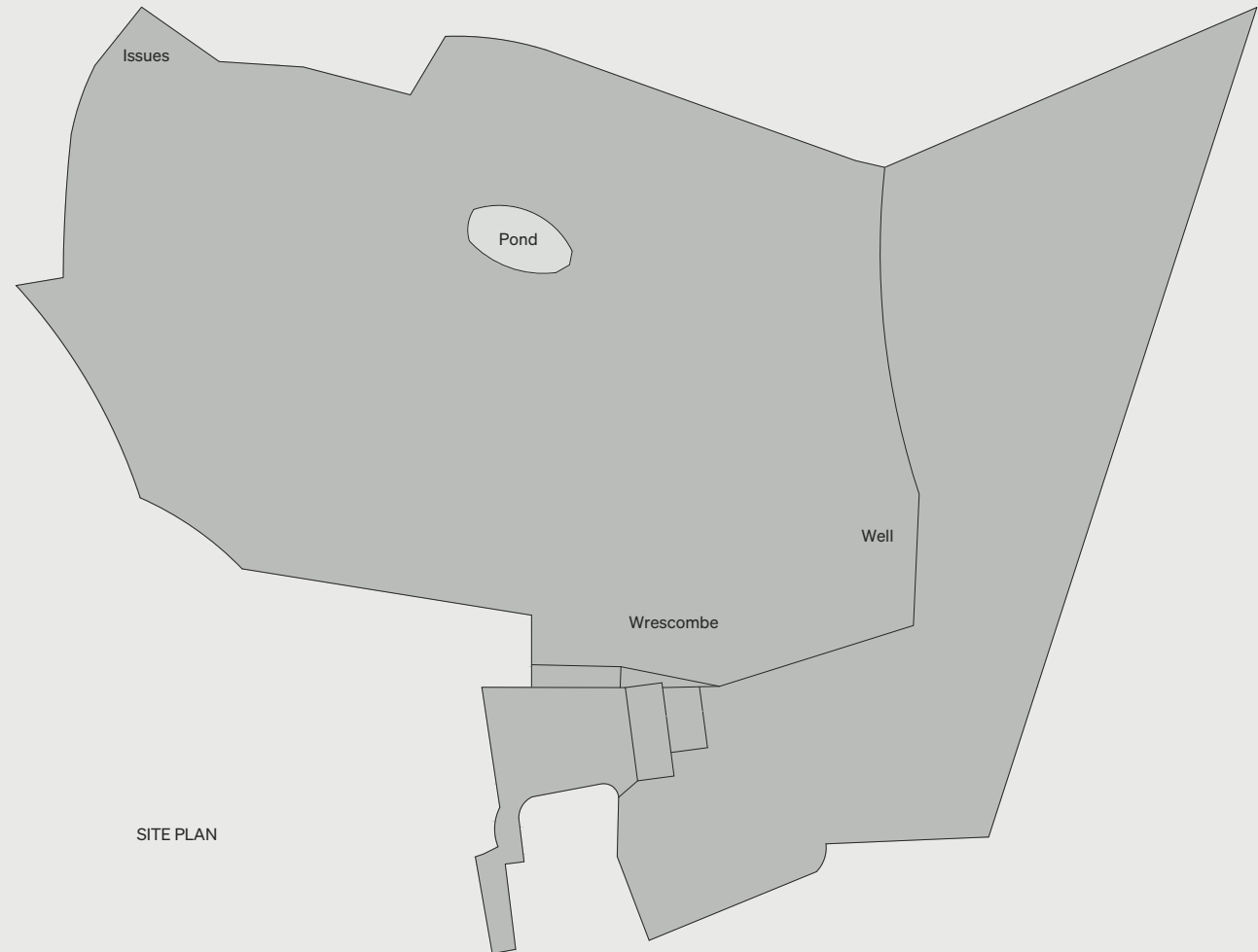
Wrescombe Court

LOCATION

Newton Ferrers, Devon

Site Plan

Approximately 8 acres



SITE PLAN

*Illustration for identification purposes only,  
measurements are approximate, not to scale*