

INIGO

PROPERTY NAME

Southdown Barns

LOCATION

Brixham, Devon

Approximate Floor Area = 392.77 sq m / 4227.5 sq ft

Barn = 112.32 sq m / 1209 sq ft

Water Treatment Store = 20.11 sq m / 216.5 sq ft

Total (exc. Games Barn and Carport) = 525.2 sq m / 5653 sq ft

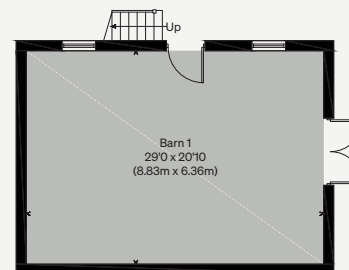
Illustration for identification purposes only, measurements are approximate, not to scale



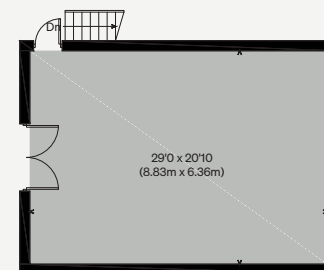
GROUND FLOOR



FIRST FLOOR



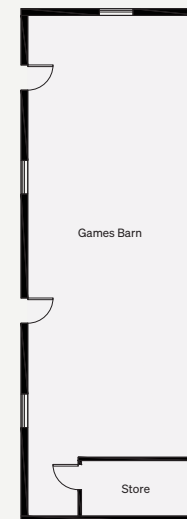
BARN - GROUND FLOOR
(Not Shown In Actual Location / Orientation)



BARN - FIRST FLOOR



(Not Shown In Actual
Location / Orientation)



(Not Shown In Actual
Location / Orientation)

