

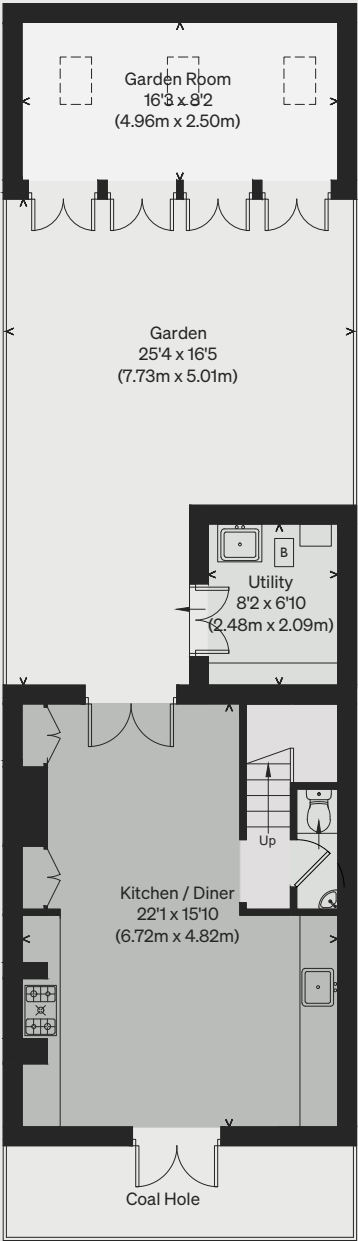
# INIGO

PROPERTY NAME  
Turner Street

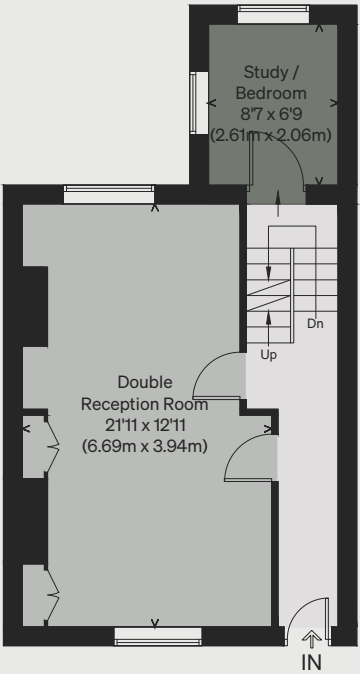
LOCATION  
London E1

Approximate Floor Area = 148.67 sq m / 1600 sq ft  
Garden Room = 11.95 sq m / 129 sq ft  
Reduced Head Height And Eaves Storage = 7.53 sq m / 81 sq ft  
Total = 168.15 sq m / 1810 sq ft

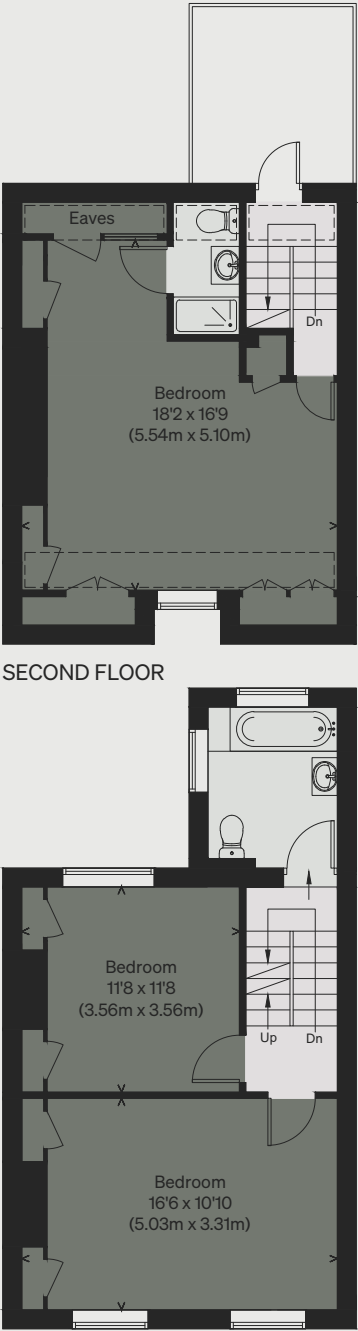
Illustration for identification purposes only,  
measurements are approximate, not to scale



LOWER GROUND FLOOR



GROUND FLOOR



FIRST FLOOR

SECOND FLOOR

