

# INIGO

PROPERTY NAME

Ennismore Gardens

LOCATION

London SW7

Approximate Floor Area = 75.6 sq m / 814 sq ft

*Illustration for identification purposes only,  
measurements are approximate, not to scale*

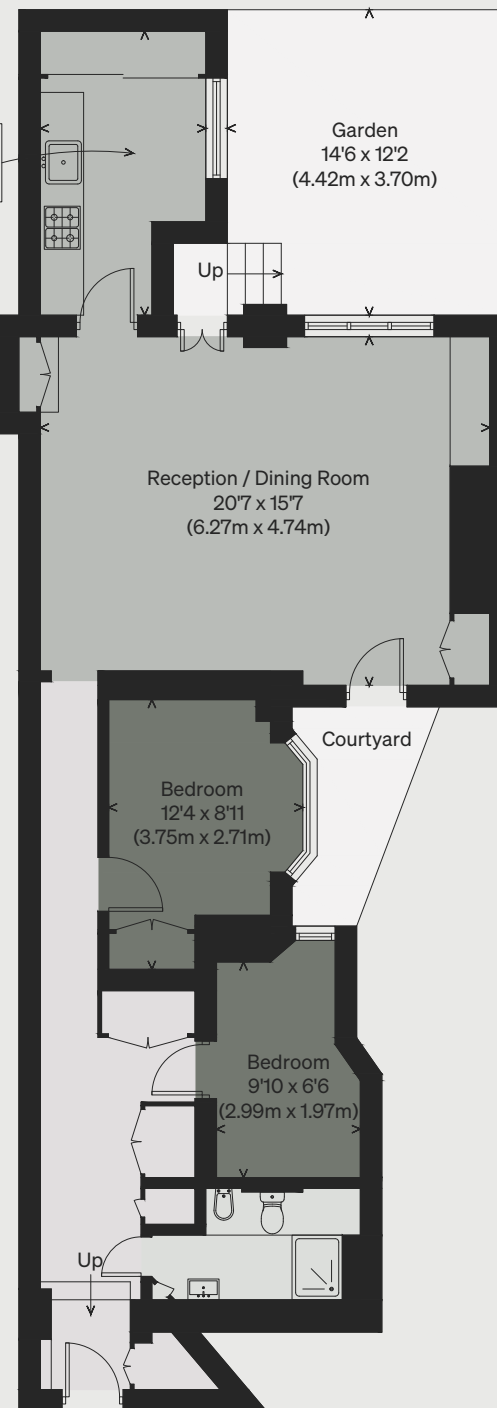
Kitchen / Dining Room  
13'0 x 7'7  
(3.95m x 2.31m)

Garden  
14'6 x 12'2  
(4.42m x 3.70m)

Reception / Dining Room  
20'7 x 15'7  
(6.27m x 4.74m)

Bedroom  
12'4 x 8'11  
(3.75m x 2.71m)

Bedroom  
9'10 x 6'6  
(2.99m x 1.97m)



LOWER GROUND FLOOR