

# INIGO

PROPERTY NAME

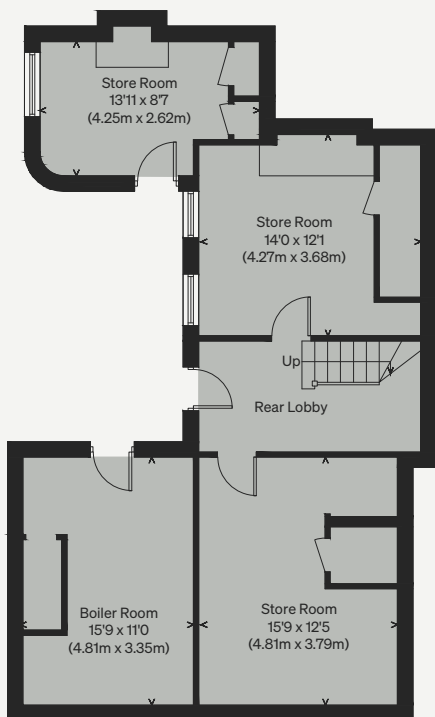
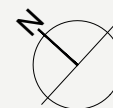
Bridge Terrace

LOCATION

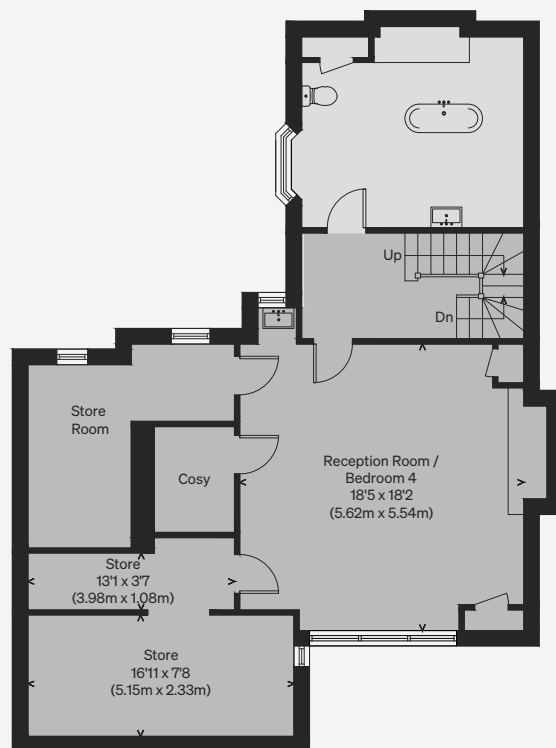
Berwick-upon-Tweed, Northumberland

Approximate Floor Area = 305.9 sq m / 3292 sq ft

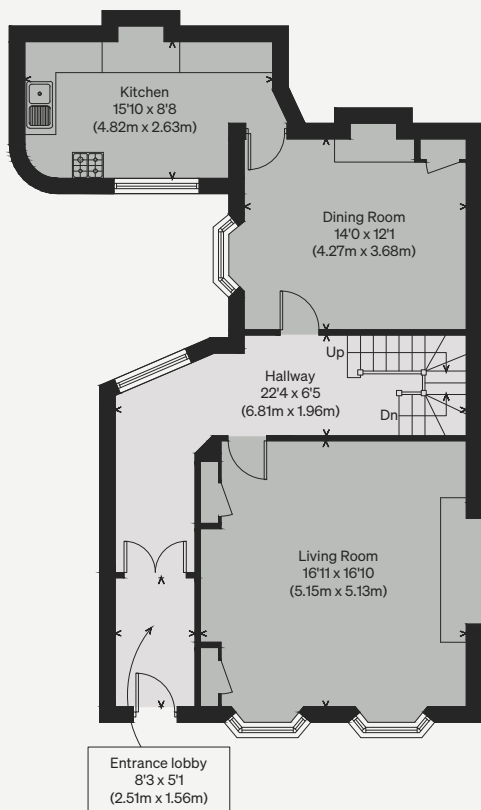
*Illustration for identification purposes only, measurements are approximate, not to scale*



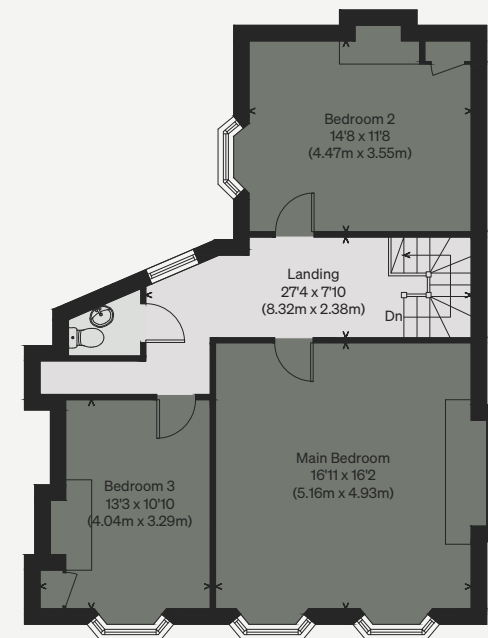
COURTYARD LEVEL



LOWER GROUND FLOOR



GROUND FLOOR



FIRST FLOOR