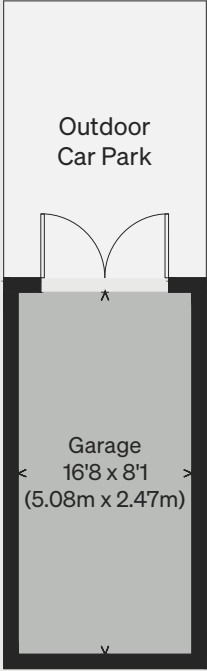
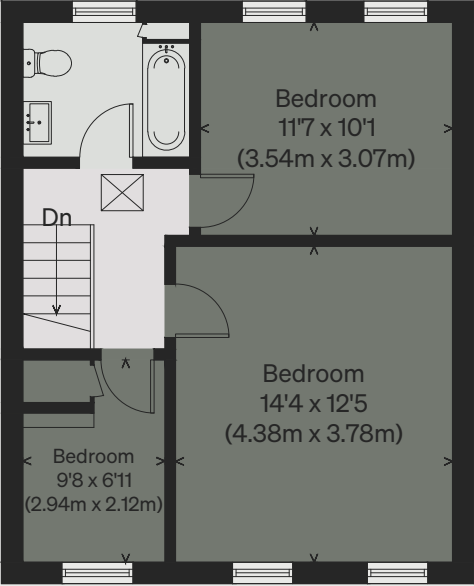
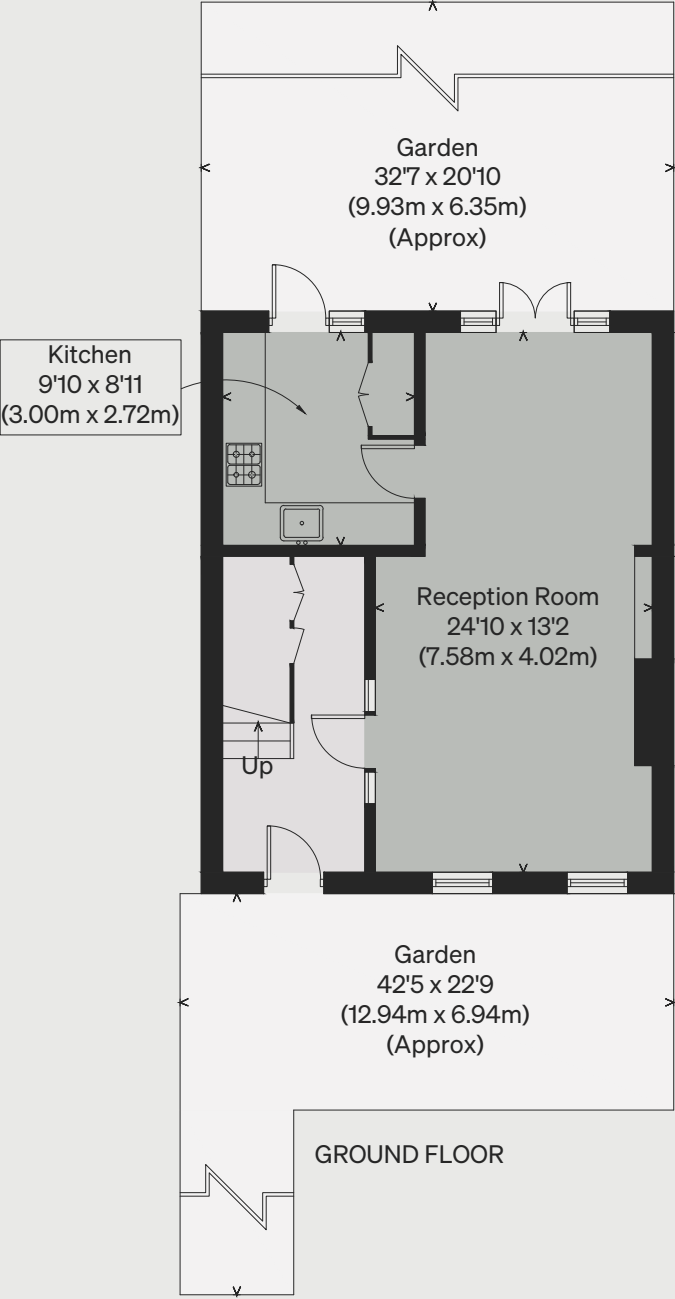


PROPERTY NAME
St Paul's Road

LOCATION
London N1

Approximate Floor Area = 92.2 sq m / 992 sq ft
Garage = 12.5 sq m / 134 sq ft
Total = 104.7 sq m / 1126 sq ft

Illustration for identification purposes only,
measurements are approximate, not to scale



(Not Shown In Actual
Location / Orientation)

