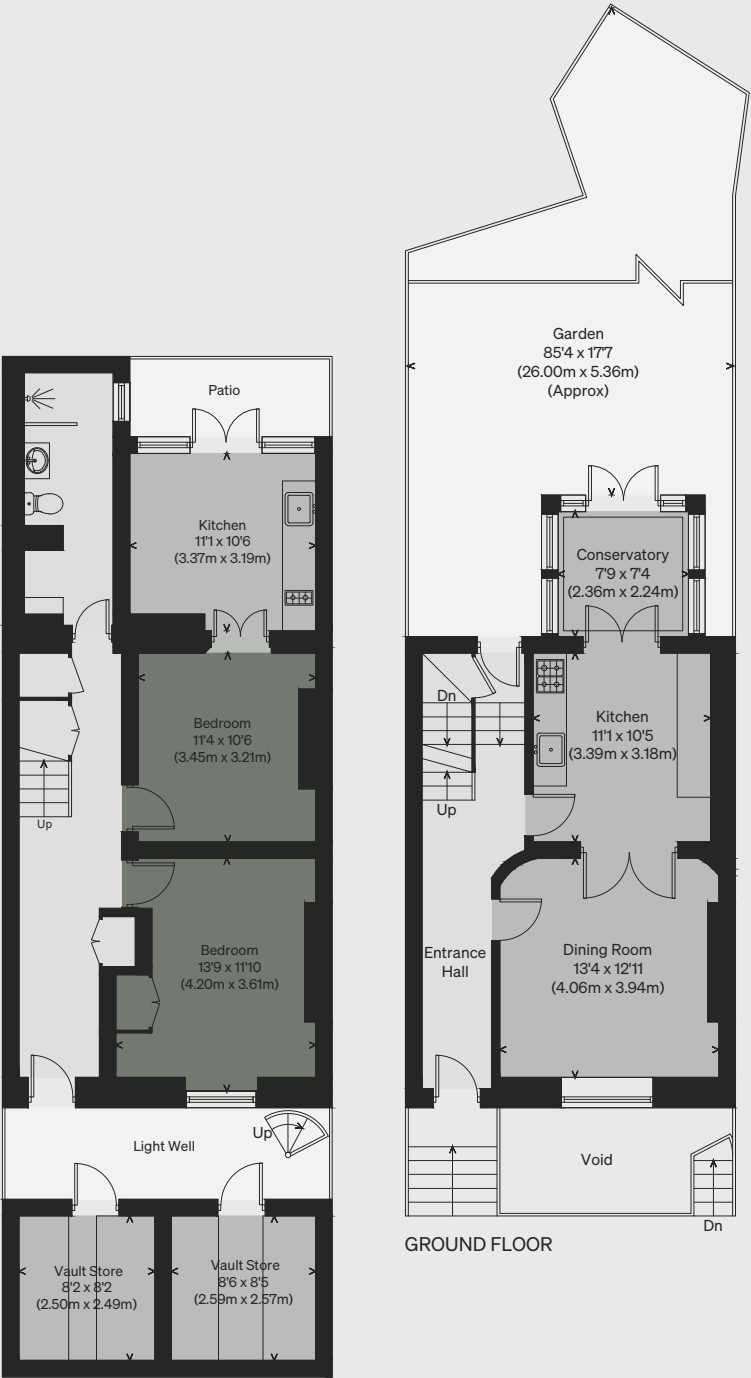


PROPERTY NAME
Mornington Crescent

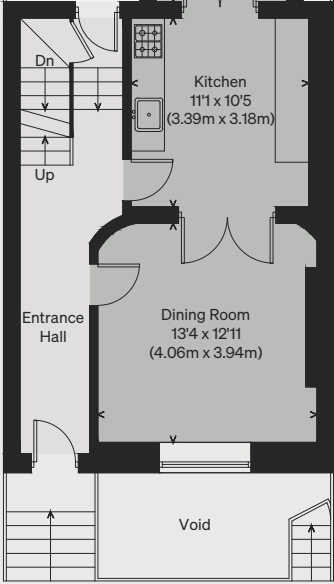
LOCATION
London NW1

Approximate Floor Area = 229.7 sq m / 2473 sq ft
Vaults = 13.6 sq m / 147 sq ft
Total = 243.3 sq m / 2620 sq ft

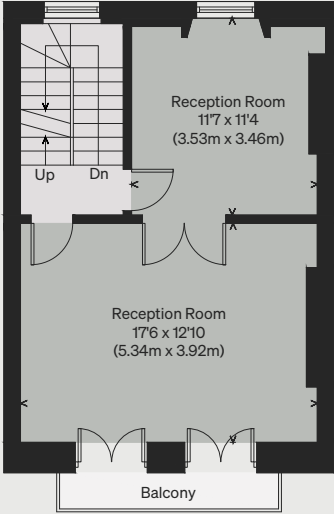
Illustration for identification purposes only,
measurements are approximate, not to scale



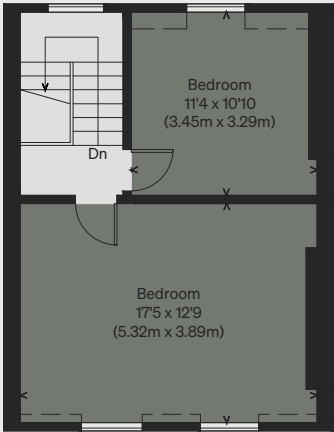
LOWER GROUND FLOOR



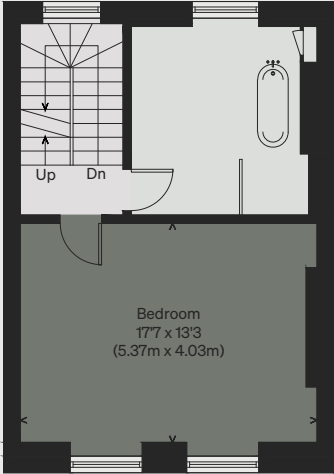
GROUND FLOOR



FIRST FLOOR



THIRD FLOOR



SECOND FLOOR