

INIGO

PROPERTY NAME

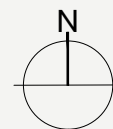
Lower Street

LOCATION

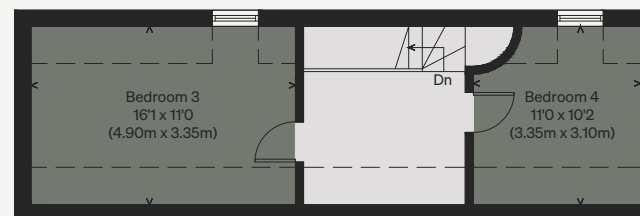
Dyrham, Gloucestershire

Approximate Floor Area = 193.6 sq m / 2084 sq ft
(Excluding Carport)

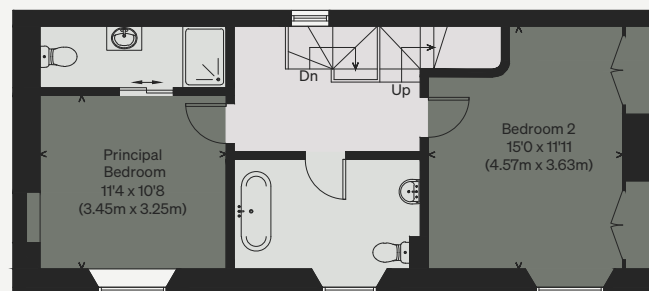
Illustration for identification purposes only, measurements are approximate, not to scale



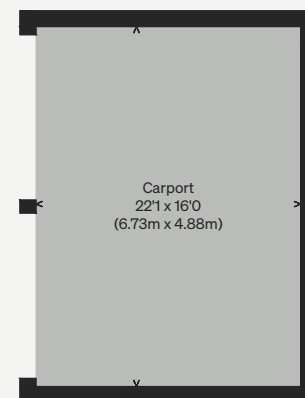
GROUND FLOOR



SECOND FLOOR



FIRST FLOOR



(Not Shown In Actual
Location / Orientation)