

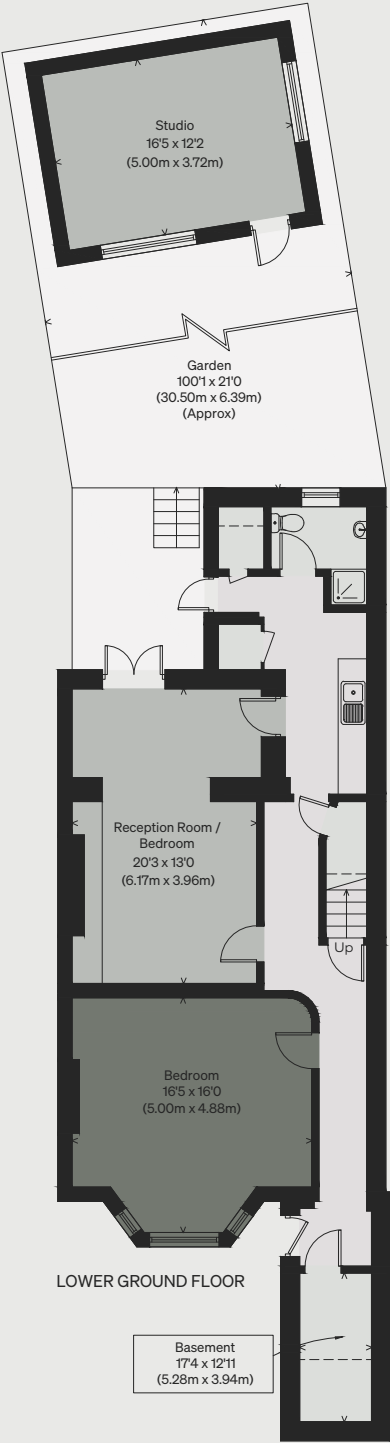
# INIGO

PROPERTY NAME  
Larkhall Rise

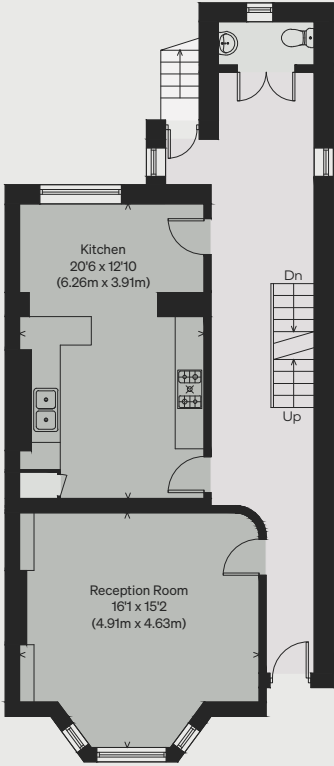
LOCATION  
London SW4

Main House = 256.1 sq m / 2757 sq ft  
Garden Studio = 18.6 sq m / 200.2 sq ft  
Basement = 20.8 sq m / 223.8 sq ft  
Total = 295.5 sq m / 3181 sq ft

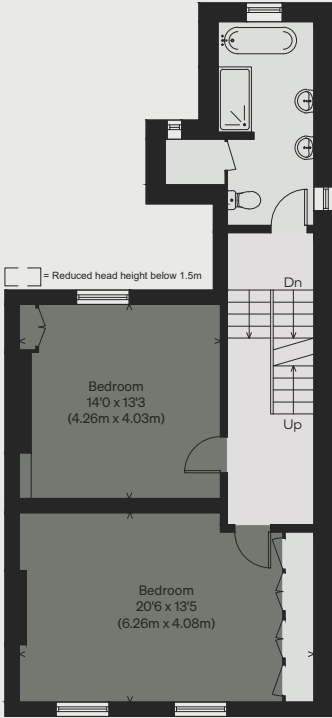
*Illustration for identification purposes only,  
measurements are approximate, not to scale*



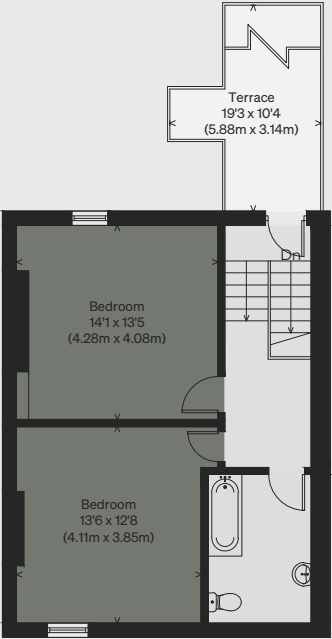
LOWER GROUND FLOOR



RAISED GROUND FLOOR



FIRST FLOOR



SECOND FLOOR

