

INIGO

PROPERTY NAME

Campsbourne Road

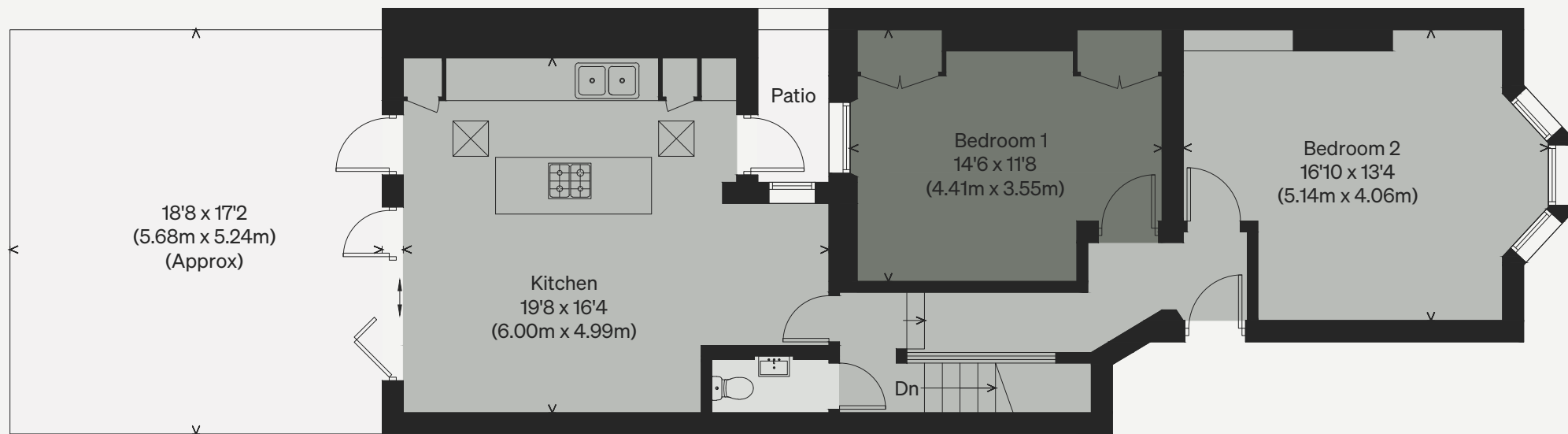
LOCATION

London N8

Approximate Floor Area = 76.8 sq m / 827 sq ft

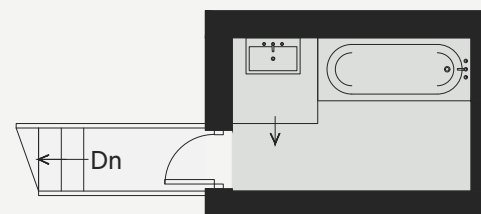
Including Limited Use Area (0.3 sq m / 3 sq ft)

Illustration for identification purposes only, measurements are approximate, not to scale



GROUND FLOOR

CH 2.98m



LOWER GROUND FLOOR

CH 1.86m