

INIGO

PROPERTY NAME

Weston Park

LOCATION

London N8

Approximate Floor Area = 56.6 sq m / 609 sq ft

*Illustration for identification purposes only,
measurements are approximate, not to scale*

Viewing Arrangements

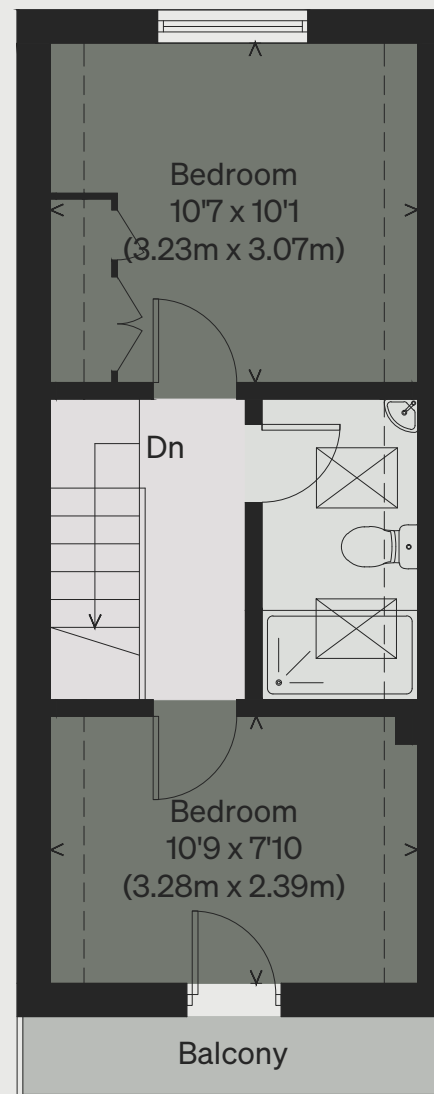
Telephone: +44 (0)20 3687 3071

Email: viewings@inigo.com



GROUND FLOOR

[] = Reduced head height below 1.5m



FIRST FLOOR