



PROPERTY NAME

Mendip Houses

LOCATION

London E2

Approximate Floor Area = 50.6 sq m / 545 sq ft

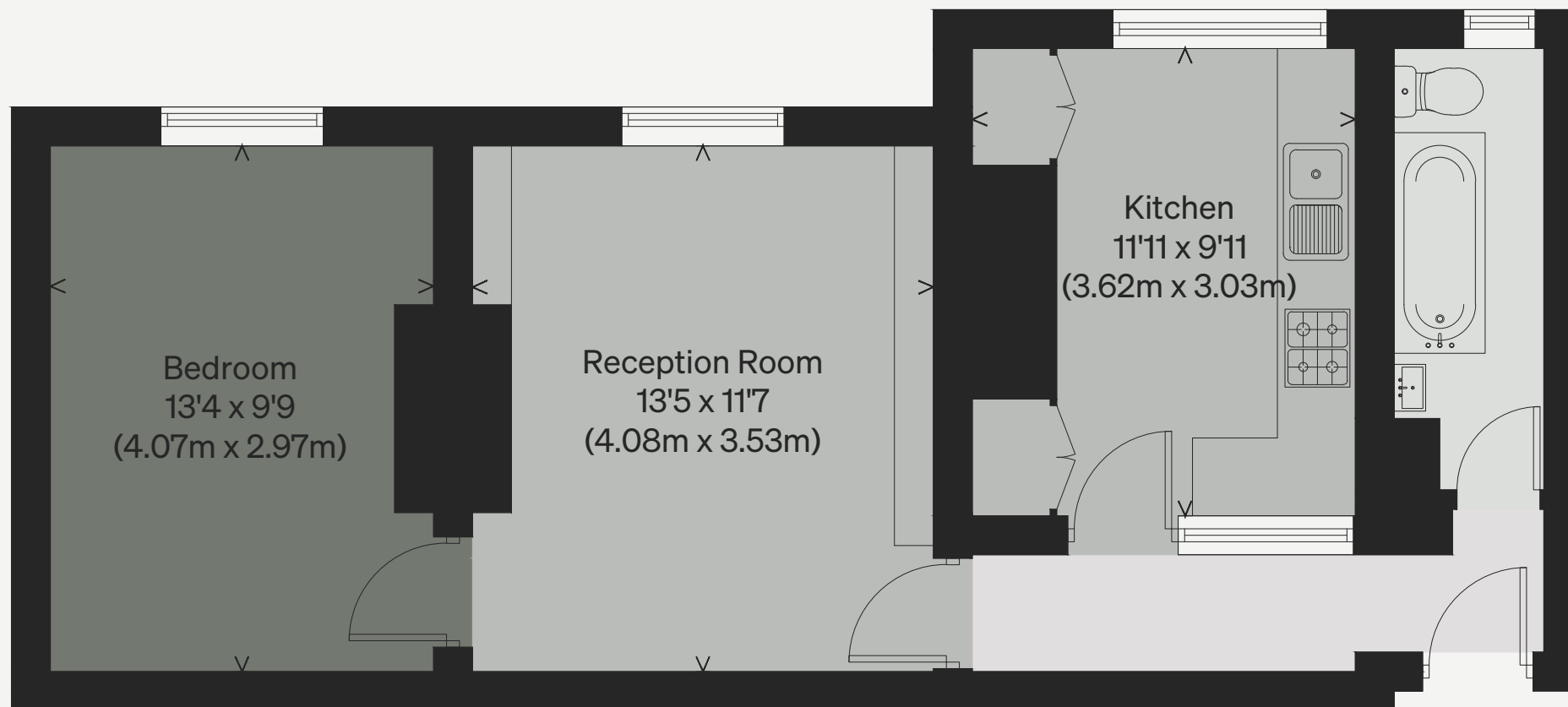
Including Limited Use Area (0.8 sq m / 9 sq ft)

Illustration for identification purposes only, measurements are approximate, not to scale

Viewing Arrangements

Telephone: +44 (0)20 3687 3071

Email: viewings@inigo.com



FIRST FLOOR