

INIGO

PROPERTY NAME

Paulet Road

LOCATION

London SE5

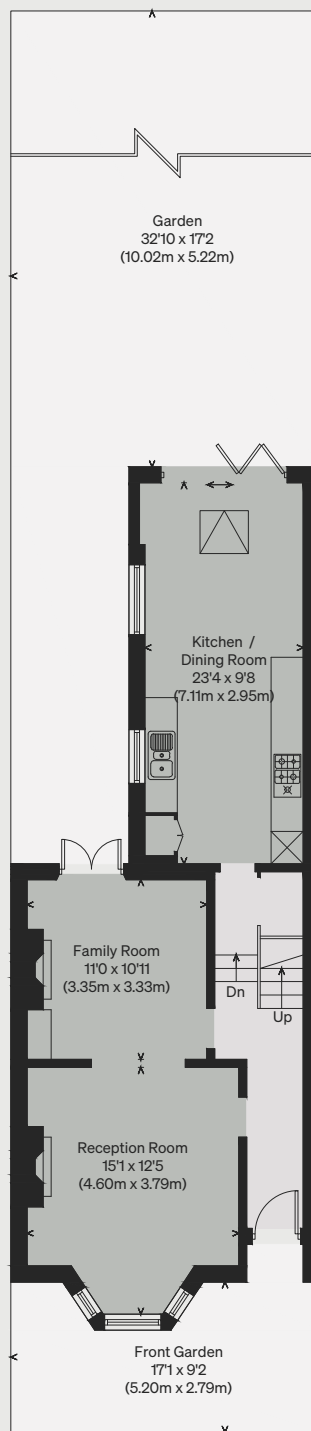
Approximate Floor Area = 169.8 sq m / 1828 sq ft
Including Limited Use Area (0.1 sq m / 1 sq ft)

*Illustration for identification purposes only,
measurements are approximate, not to scale*

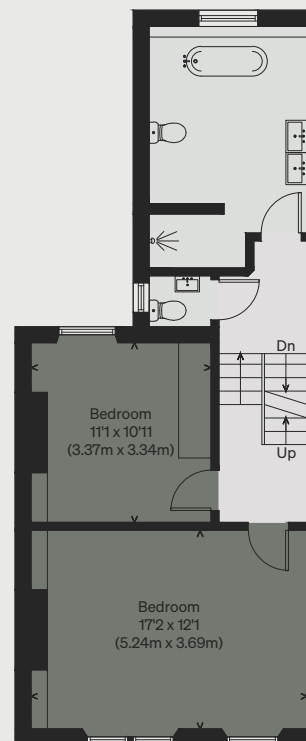
Viewing Arrangements

Telephone: +44 (0)20 3687 3071

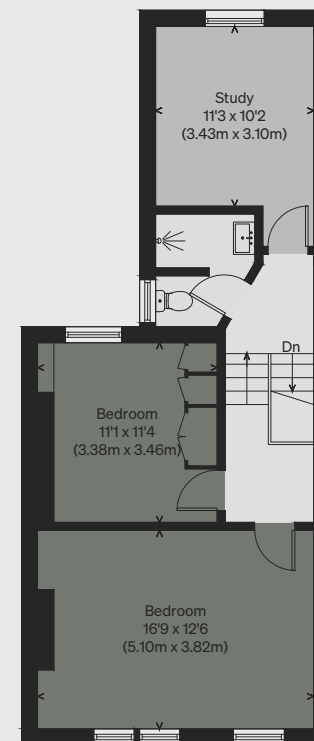
Email: viewings@inigo.com



GROUND FLOOR



FIRST FLOOR



SECOND FLOOR

