

INIGO

PROPERTY NAME

Colvestone Crescent

LOCATION

London E8

Approximate Floor Area = 156.8 sq m / 1688 sq ft

Studio / Home Office = 12.9 sq m / 139 sq ft

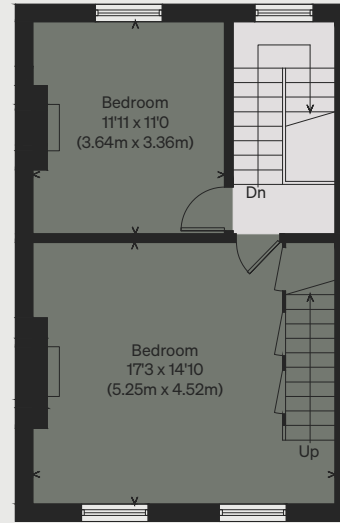
Total = 169.7 sq m / 1827 sq ft (Excluding Eaves)

*Illustration for identification purposes only,
measurements are approximate, not to scale*

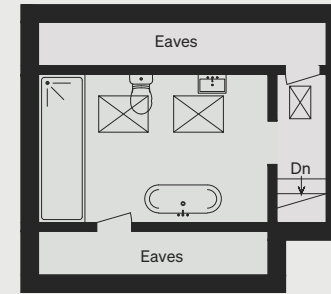
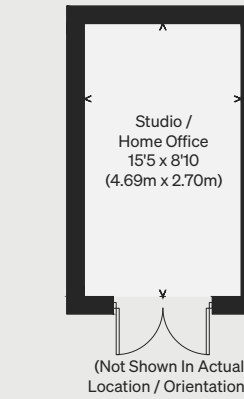
Viewing Arrangements

Telephone: +44 (0)20 3687 3071

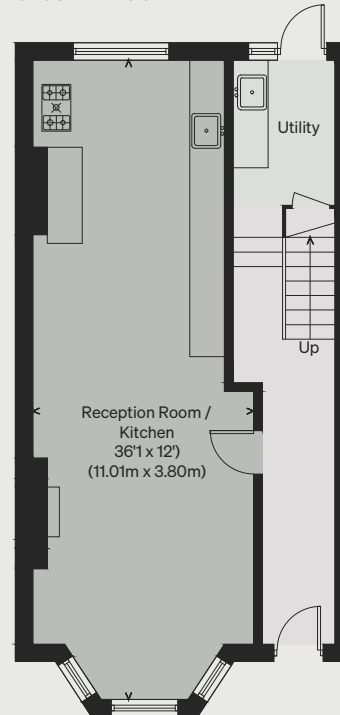
Email: viewings@inigo.com



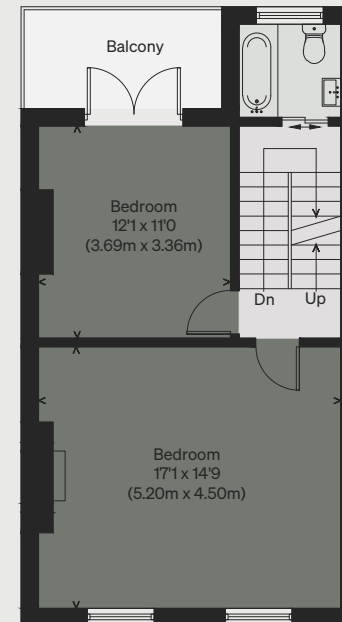
SECOND FLOOR



THIRD FLOOR



GROUND FLOOR



FIRST FLOOR

