



PROPERTY NAME

Lintz Green

LOCATION

Rowlands Gill, Newcastle Upon Tyne

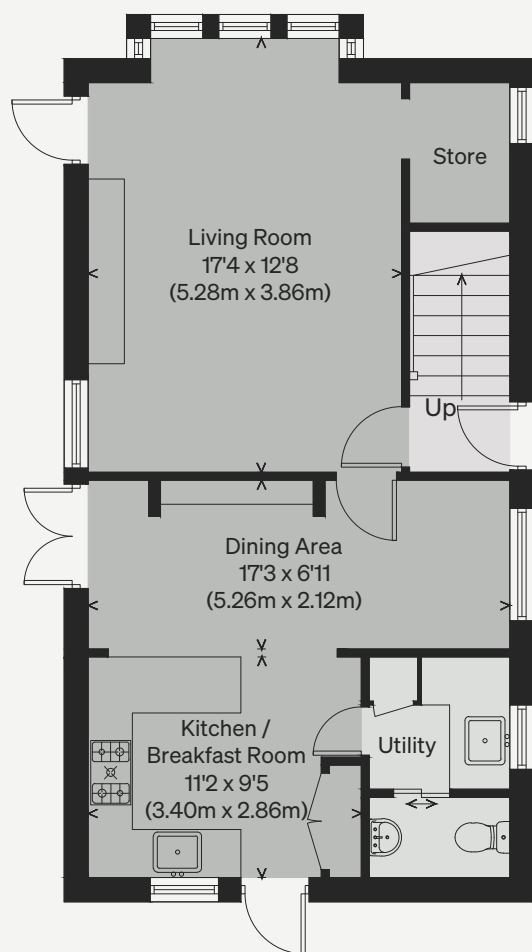
Approximate Floor Area = 116.3 sq m / 1252 sq ft

Illustration for identification purposes only, measurements are approximate, not to scale

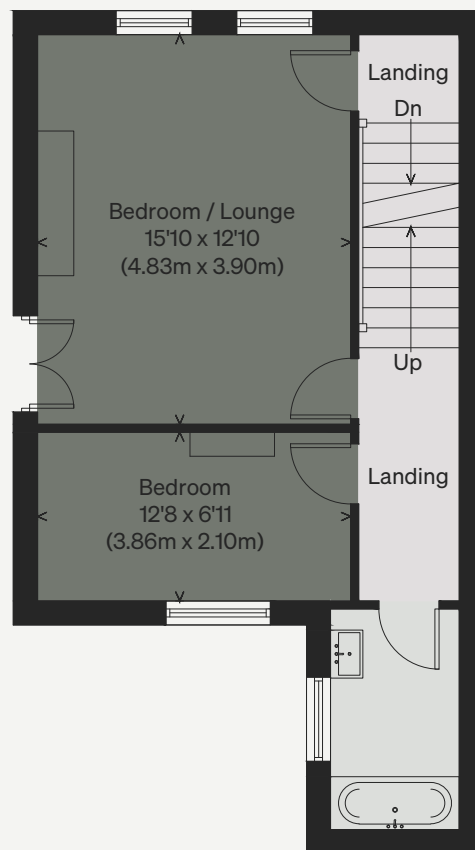
Viewing Arrangements

Telephone: +44 (0)20 3687 3071

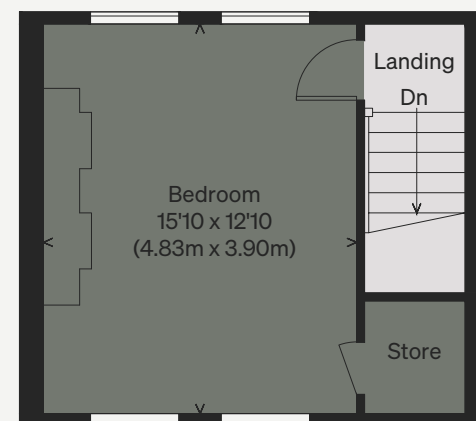
Email: viewings@inigo.com



GROUND FLOOR



FIRST FLOOR



SECOND FLOOR

