

INIGO

PROPERTY NAME

Liverpool Road

LOCATION

London N1

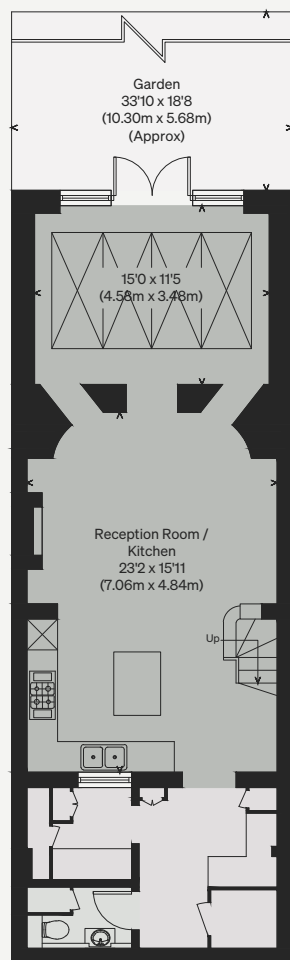
Approximate Floor Area = 189.4 sq m / 2039 sq ft

Illustration for identification purposes only, measurements are approximate, not to scale

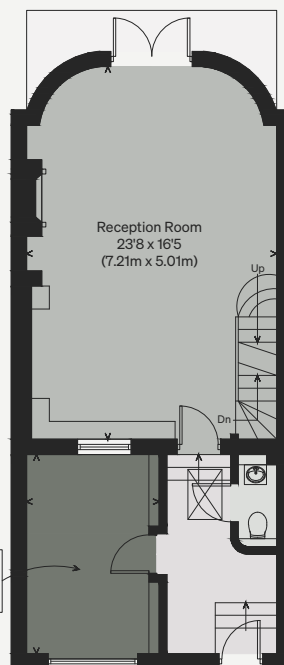
Viewing Arrangements

Telephone: +44 (0)20 3687 3071

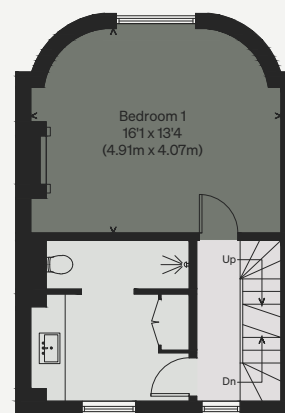
Email: viewings@inigo.com



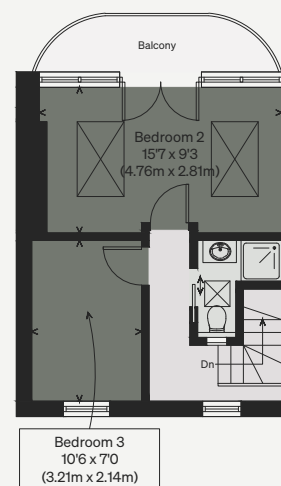
LOWER GROUND FLOOR



GROUND FLOOR



FIRST FLOOR



SECOND FLOOR

