

INIGO

PROPERTY NAME

Nassington Road

LOCATION

London NW3

Approximate Floor Area = 118.5 sq m / 1275 sq ft (Excluding Voids/ Eaves Storage)

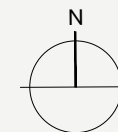
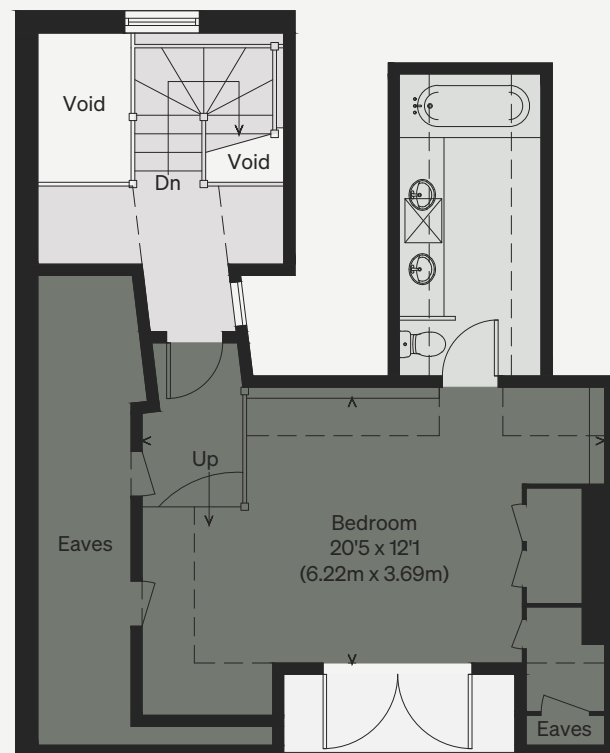
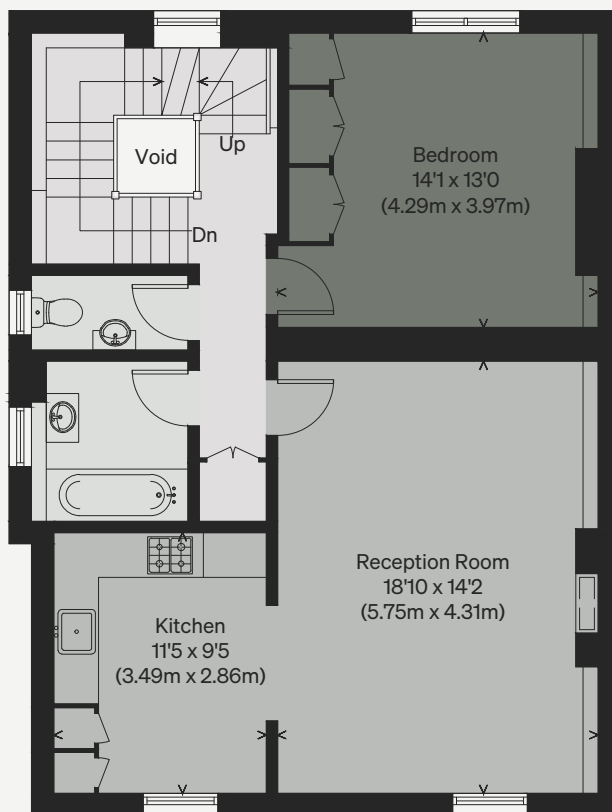
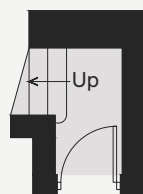
Including Limited Use Area = 11.8 sq m / 127 sq ft

Illustration for identification purposes only, measurements are approximate, not to scale

Viewing Arrangements

Telephone: +44 (0)20 3687 3071

Email: viewings@inigo.com



FIRST FLOOR

SECOND FLOOR

THIRD FLOOR