

INIGO

PROPERTY NAME

Waxwing

LOCATION

Berwick-upon-Tweed, Northumberland

Approximate Floor Area = 176.2 sq m / 1897 sq ft

Basement = 46.9 sq m / 505 sq ft

Yard = 45.6 sq m / 491 sq ft

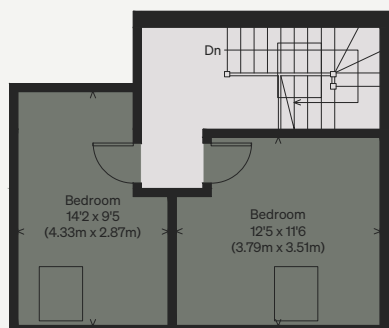
Total = 268.7 sq m / 2893 sq ft

Illustration for identification purposes only, measurements are approximate, not to scale

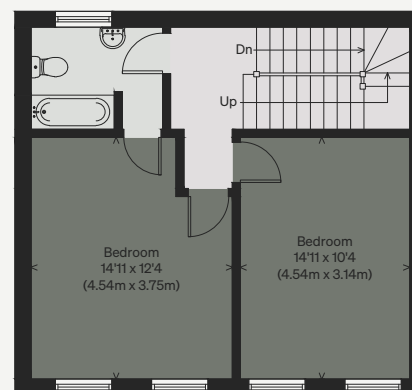
Viewing Arrangements

Telephone: +44 (0)20 3687 3071

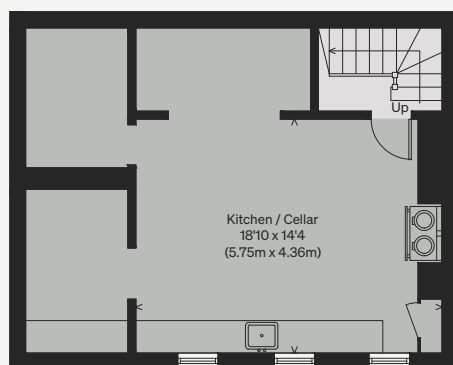
Email: viewings@inigo.com



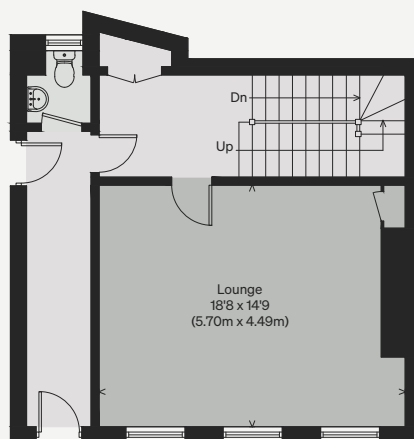
TOP FLOOR



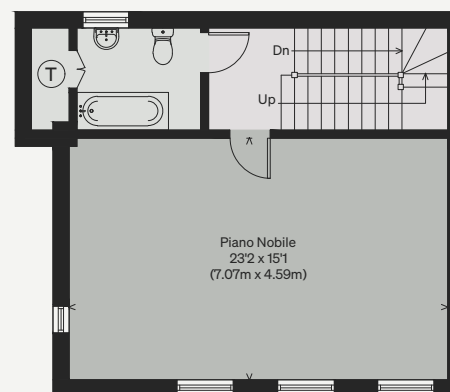
SECOND FLOOR



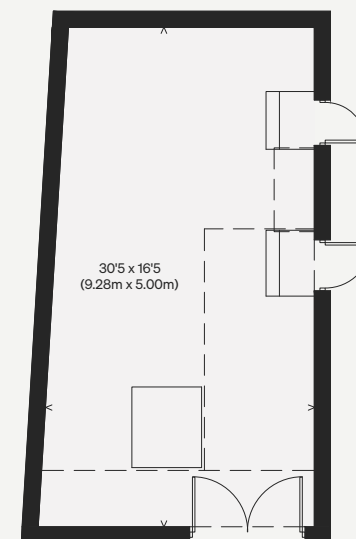
BASEMENT



GROUND FLOOR



FIRST FLOOR



YARD
(NOT SHOWN IN ACTUAL
LOCATION / ORIENTATION)