

# INIGO

PROPERTY NAME

The White Lodge

LOCATION

London N4

Approximate Floor Area = 211.1 sq m / 2272 sq ft

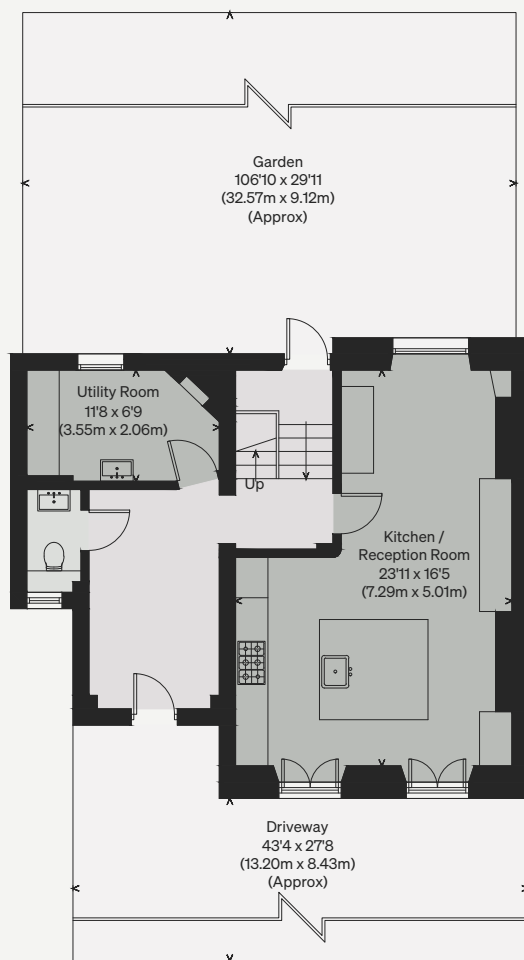
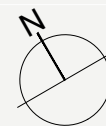
Including Limited Use Area (1.3 sq m / 14 sq ft)

*Illustration for identification purposes only, measurements are approximate, not to scale*

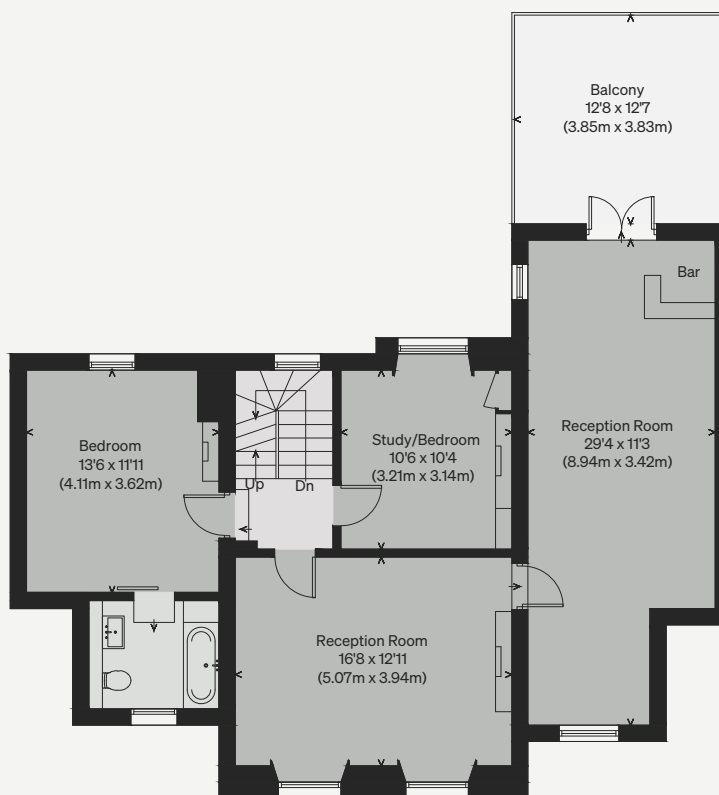
Viewing Arrangements

Telephone: +44 (0)20 3687 3071

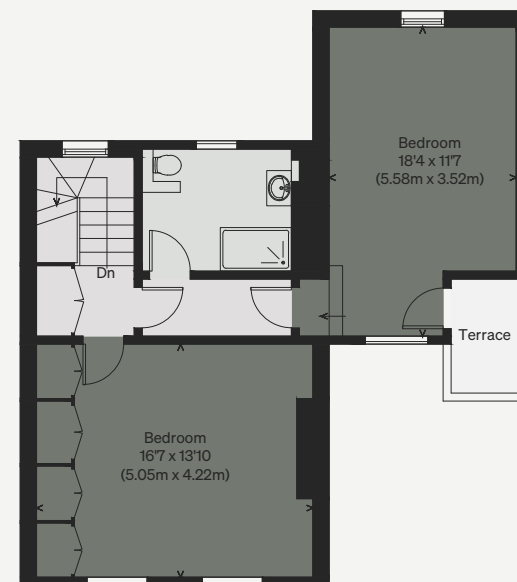
Email: [viewings@inigo.com](mailto:viewings@inigo.com)



RAISED GROUND FLOOR



FIRST FLOOR



SECOND FLOOR