

# INIGO

PROPERTY NAME

Steeles Road

LOCATION

London NW3

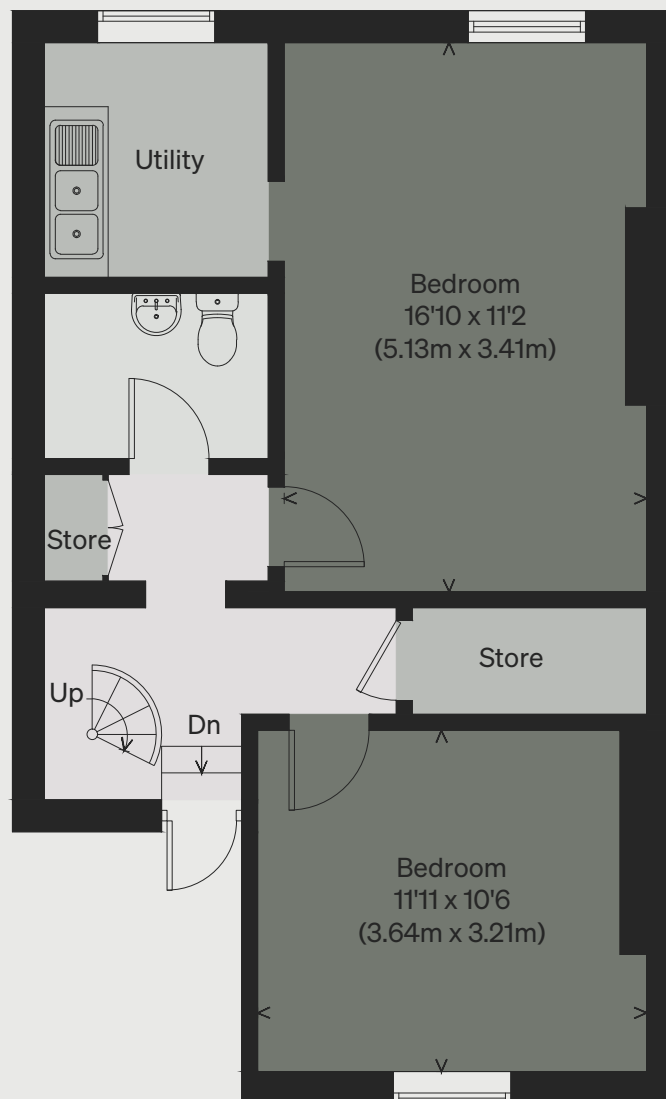
Approximate Floor Area = 92.9 sq m / 1000 sq ft  
Including Limited Use Area (0.9 sq m / 10 sq ft)  
(Excluding Void)

*Illustration for identification purposes only,  
measurements are approximate, not to scale*

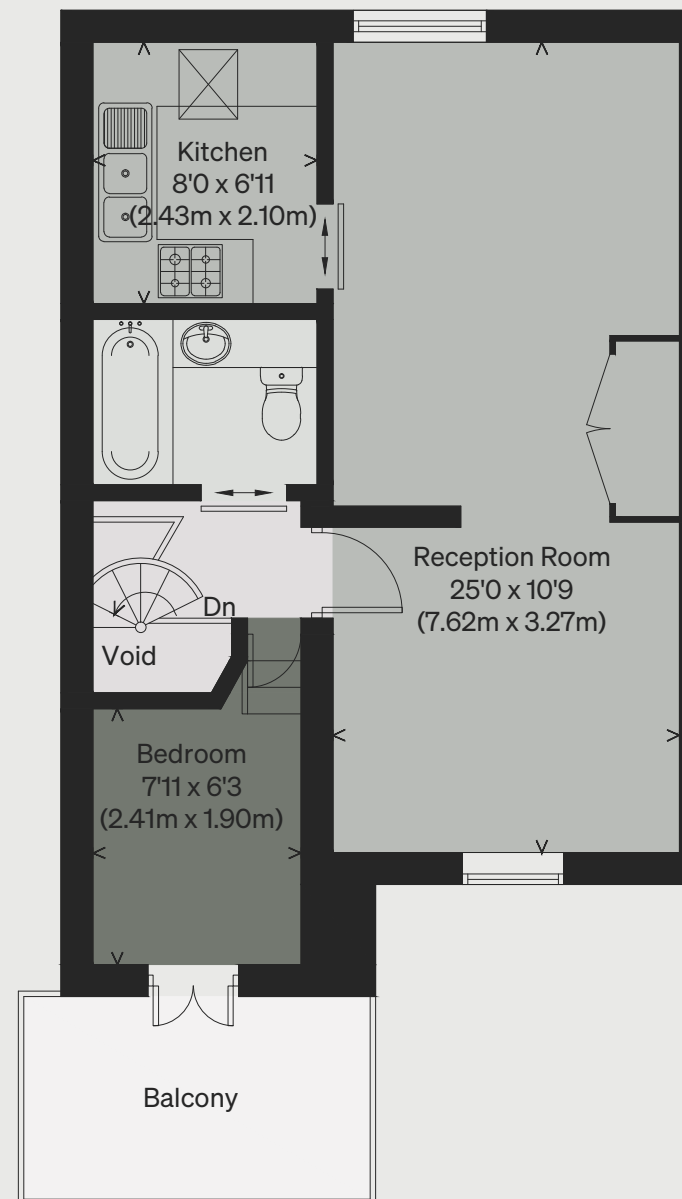
Viewing Arrangements

Telephone: +44 (0)20 3687 3071

Email: [viewings@inigo.com](mailto:viewings@inigo.com)



SECOND FLOOR



THIRD FLOOR

