

INIGO

PROPERTY NAME

Queensdale Road

LOCATION

London W11

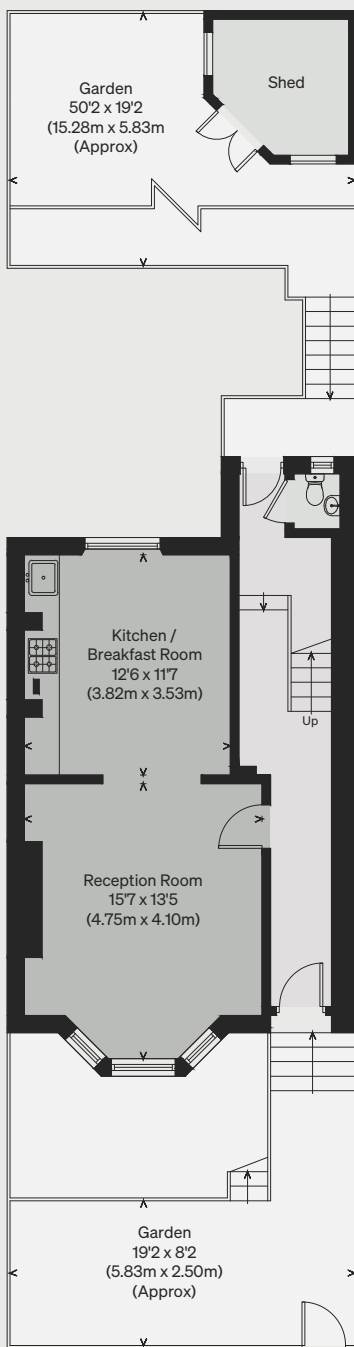
Approximate Floor Area = 139 sq m / 1496 sq ft

*Illustration for identification purposes only,
measurements are approximate, not to scale*

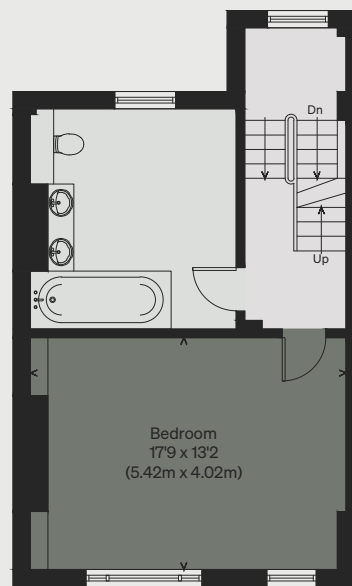
Viewing Arrangements

Telephone: +44 (0)20 3687 3071

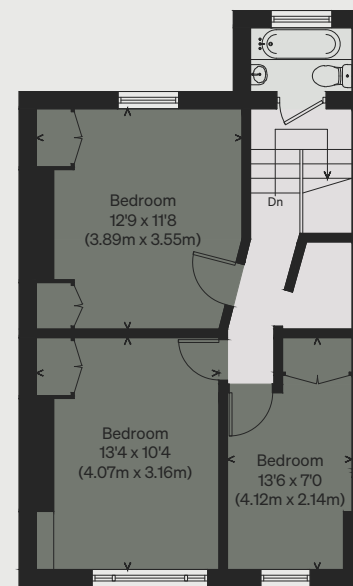
Email: viewings@inigo.com



RAISED GROUND FLOOR



FIRST FLOOR



SECOND FLOOR

