

# INIGO

PROPERTY NAME

Ospringe Road

LOCATION

London NW5

Approximate Floor Area = 46.0 sq m / 495 sq ft

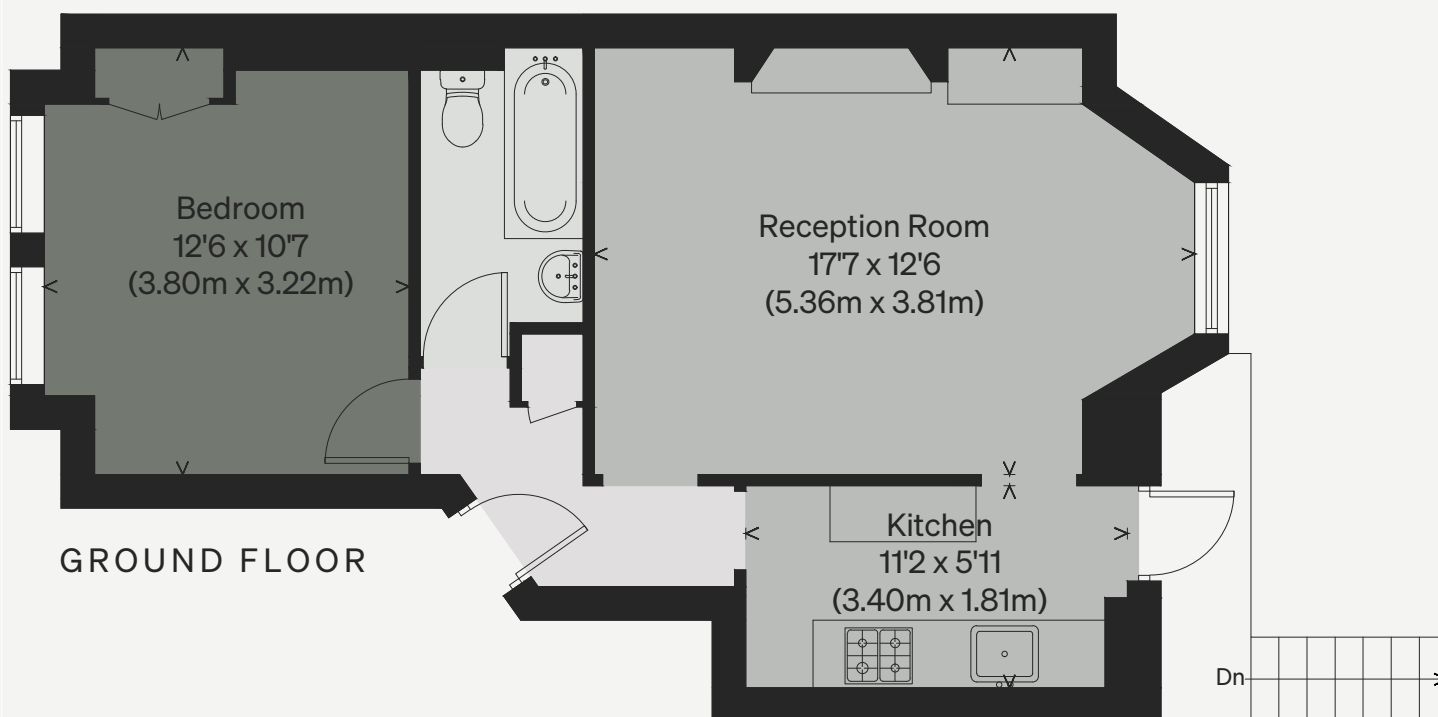
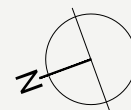
Including Limited Use Area (0.7 sq m / 7 sq ft)

*Illustration for identification purposes only, measurements are approximate, not to scale*

Viewing Arrangements

Telephone: +44 (0)20 3687 3071

Email: [viewings@inigo.com](mailto:viewings@inigo.com)



(Not Shown In Actual Location / Orientation)